



# MERCHANDISING

MADE TO ORDER & STOCK CATALOGUE





### **Made To Order**

We considered the diversity and range of requirements of our customers. Based on this we have created a stock range of garments which we can adapt to meet our customers specific requirements.

The entire range is manufactured in Portugal and can be modified to meet your specification. Choose from our available stock fabrics and colours on page 49 to mix and match designs. Alternately we can pantone dye garments to meet your exact colour needs.

If you choose a stock design the minimum order is 25 garments which includes free delivery.  
If you order our stock designs but change the colours to your requirements then the minimum order is 100 garments per style  
If we pantone dye garments then the minimum order is 250 garments. We can supply less than this but there would be a surcharge.

### **Assistance and Quotes**

We are always delighted to offer advice and assist in any way we can. Please contact us on 01908 290482 or email [sales@impacttrading.co.uk](mailto:sales@impacttrading.co.uk)

We look forward to working with you.



**We can change the colours and detail of these stock items if required. Minimum order 50.**

2

**T-SHIRT**



8

**POLO**



28

**JACKET**



32

**SWEAT**



38

**KIDS**



## **YOUR BRAND, OUR QUALITY**

PICOS HAS BEEN IN THIS TEXTILE TRADE FOR MORE THAN 20 YEARS, MANUFACTURING HIGH QUALITY PROMOTIONAL, CORPORATE AND CLUB-WEAR.

**OUR LOGO STANDS FOR QUALITY AND SERVICE,  
THUS IMPLYING:**

- HIGH QUALITY YARNS -
- NEATLY FINISHED GARMENTS -
- STRICT QUALITY CONTROL -
- IT STANDS FOR RESPECT -**
- RESPECT FOR THE CUSTOMER AND HIS REQUIREMENTS -
- CARING FOR THE ENVIRONMENT -
- MAINTAINING PUBLIC HEALTH STANDARDS -
- IT STANDS FOR 100% MANUFACTURED IN THE EU -**





---

# T-SHIRT

---

MERCHANDISING COLLECTION

---

2014/2015

---



# ALPHAMEN

## SHORT & LONG SLEEVE T-SHIRT

Jersey 100% combed cotton - 160g/m<sup>2</sup>

- > Fine gauge jersey in combed cotton
- > Trendy lower rib on neck opening
- > Contrast herringbone tape on back neck
- > Slim fit on body and sleeves, keeping in line with fashion
- > Shoulder seam at the front for a better fit

XS S M L XL XXL XXXL



### SHORT SLEEVE



### COLOURS

BLACK  RED 

MEDIUM HEATHER GREY  FUCHSIA 

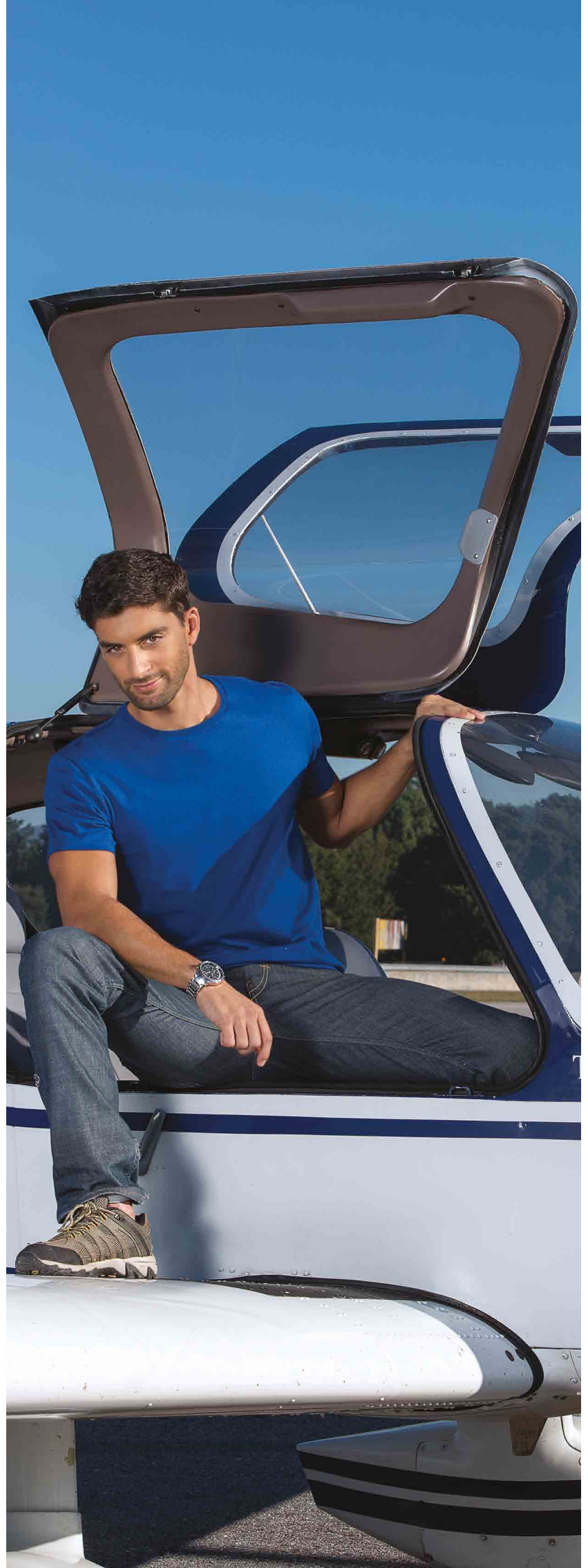
WHITE  KELLY GREEN 

ROYAL 

NAVY 

TUROUOISE 

### LONG SLEEVE





ALPHA KIDS P.40

## ALPHA WOMEN

### SHORT & LONG SLEEVE T-SHIRT

Jersey 100% combed cotton - 160g/m<sup>2</sup>

- > Fine gauge jersey in combed cotton
- > Trendy lower rib on neck opening
- > Contrast herringbone tape on back neck
- > Slim fit on body and sleeves, keeping in line with fashion
- > Shoulder seam at the front for a better fit

34 36 38 40 42



#### SHORT SLEEVE



#### COLOURS

BLACK		RED	
MEDIUM HEATHER GREY		FUCHSIA	
WHITE		KELLY GREEN	
ROYAL			
NAVY			
TURQUOISE			

#### LONG SLEEVE



# BOATMEN

## SHORT SLEEVE T-SHIRT

Pique 100% combed cotton - 200g/m<sup>2</sup>

- > A mixture of plain colour and yarn dye
- > Round neck in rib 1x1
- > Contrast herringbone tape on back neck
- > Twin-needle stitching on bottom and sleeve hems

XS S M L XL XXL XXXL



### SHORT SLEEVE



### DETAIL



BACK NECK TAPE





# BOATWOMEN

## SHORT SLEEVE T-SHIRT

Pique 100% combed cotton - 200g/m<sup>2</sup>

- > A mixture of plain colour and yarn dye
- > Round neck in rib 1x1
- > Contrast herringbone tape on back neck
- > Twin-needle stitching on bottom and sleeve hems

34

36

38

40

42



### SHORT SLEEVE



### DETAIL



BACK NECK  
TAPE

***We can change the colours and detail of  
these stock items if required. Minimum  
order 50.***



---

**POLO**

---

MERCHANDISING COLLECTION

---

2014/2015

---



# ROUTEMEN

## SHORT & LONG SLEEVE POLO SHIRT

Pique 100% combed cotton - 200g/m<sup>2</sup>

- > Fine gauge pique in combed cotton
- > Concealed button placket
- > Shoulder seams at the front for a better fit
- > Contrast herringbone tape on back neck and side vents
- > Twin-needle stitching on bottom and sleeve hems ( rib 1 x 1 with elastane on the long sleeve version )

XS S M L XL XXL XXXL



### SHORT SLEEVE



### COLOURS

BLACK  RED 

MEDIUM HEATHER GREY  FUCHSIA 

WHITE  PINK 

ROYAL  ORANGE 

NAVY  KELLY GREEN 

TURQUOISE  LIME 

### LONG SLEEVE





ROUTEKIDS P.37

## ROUTEWOMEN

### SHORT & LONG SLEEVE POLO SHIRT

Pique 100% combed cotton - 200g/m<sup>2</sup>

- > Fine gauge pique in combed cotton
- > Concealed button placket
- > Shoulder seams at the front for a better fit
- > Contrast herringbone tape on back neck and side vents
- > Twin-needle stitching on bottom and sleeve hems ( rib 1 x 1 with elastane on the long sleeve version )

34 36 38 40 42



#### SHORT SLEEVE



#### COLOURS

BLACK		RED	
MEDIUM HEATHER GREY		FUCHSIA	
WHITE		PINK	
ROYAL		ORANGE	
NAVY		KELLY GREEN	
TUROUOISE		LIME	

#### LONG SLEEVE



## JULIETA WOMEN

### SHORT SLEEVE POLO DRESS

Pique 95% cotton, 5% elastane  
190g/m<sup>2</sup>

- > Fine gauge STRETCH pique
- > Narrow 4 button placket
- > Contrast herringbone tape on back neck
- > Twin-needle stitching on bottom and sleeve hems

34 36 38 40 42



#### POLO DRESS



#### COLOURS



BLACK



NAVY



WHITE



**We can change the colours  
and detail of all our stock  
items if required. Minimum  
order 50.**

## YACHTMEN

### SHORT SLEEVE POLO SHIRT

**Jersey 100% combed cotton - 160g/m<sup>2</sup>**

- > Fine gauge jersey in combed cotton
- > Tri-colour fancy tape on back neck collar stand and inside placket
- > Contrast binding on placket edge and at sleeve hems
- > Contrast band application on outer collar and around sleeve hems
- > Button placket with lower button in contrast colour

XS S M L XL XXL XXXL



### SHORT SLEEVE



### COLOURS



BLACK



NAVY



WHITE



RED

### DETAILS



COLLAR



BACK NECK  
COLLAR

# BAYMEN

## SHORT SLEEVE POLO SHIRT

Jersey 100% combed cotton - 110g/m<sup>2</sup>

- > Extremely light jersey using a very fine cotton yarns
- > Contrast inside button placket, collar and collar stand
- > Long and narrow five button placket, matching collar colour
- > Contrast herringbone tape on back neck, with matching button holes
- > Contrast panel at sleeve hems

XS S M L XL XXL XXXL



### SHORT SLEEVE



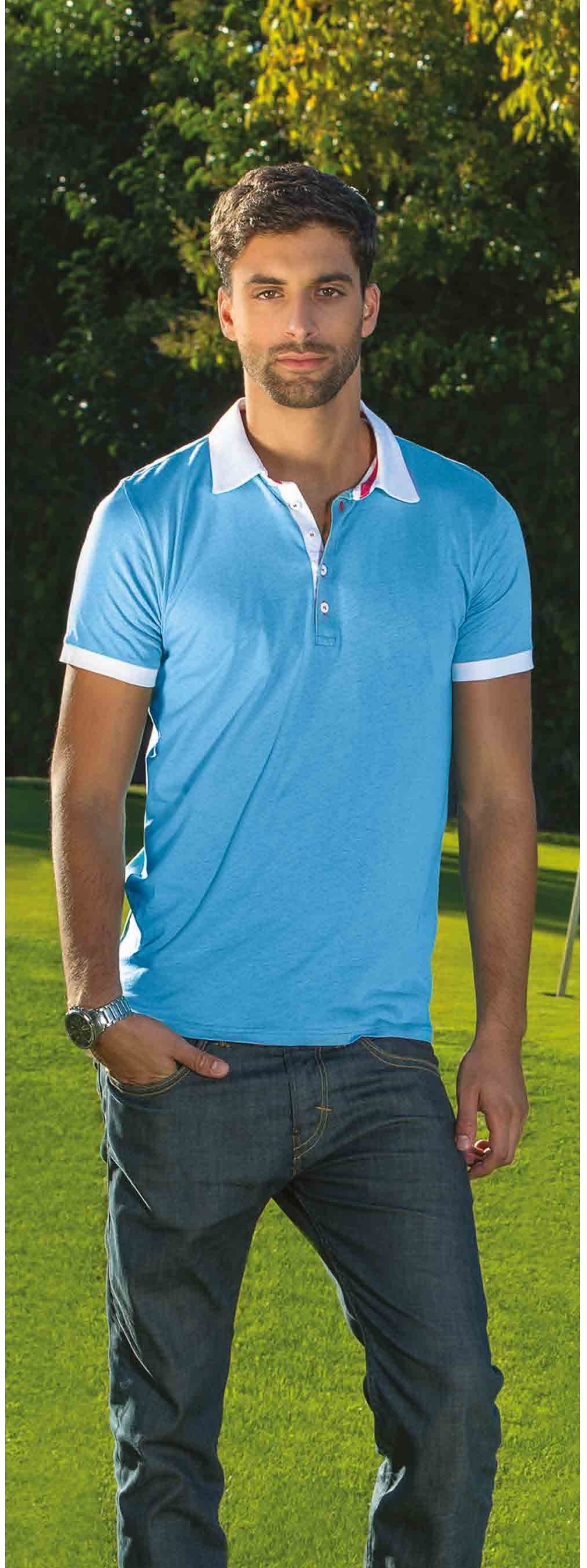
### COLOURS

- BLACK
- WHITE
- NAVY
- TURQUOISE
- RED
- FUCHSIA

### DETAIL



COLLAR







## BAYWOMEN

### SHORT SLEEVE POLO SHIRT

Jersey 100% combed cotton - 110g/m<sup>2</sup>

- > Extremely light jersey using a very fine cotton yarns
- > Contrast inside button placket, collar and collar stand
- > Long and narrow five button placket, matching collar colour
- > Contrast herringbone tape on back neck, with matching button holes
- > Contrast panel at sleeve hems

34

36

38

40

42



### SHORT SLEEVE



### COLOURS

BLACK 

WHITE 

NAVY 

TUROUISE 

RED 

FUCHSIA 

### DETAIL



COLLAR



CONDORKIDS P.44

## CONDORMEN

### SHORT SLEEVE POLO SHIRT

Pique 100% combed cotton - 200g/m<sup>2</sup>

- > Fine gauge pique in combed cotton
- > Striped ribbed collar, cuffs and inside placket
- > Contrast herringbone tape on back neck and side vents
- > Tri-colour buttons on placket

XS S M L XL XXL XXXL



### COLOURS



NAVY / WHITE / PINK



WHITE / NAVY / PINK

### DETAIL



COLLAR





STELLAKIDS P.45

## STELLA WOMEN

### SHORT SLEEVE POLO DRESS

Pique 95% cotton, 5% elastane 190g/m<sup>2</sup>

- > Fine gauge STRETCH pique
- > Narrow button placket in twill
- > Tri-colour buttons on placket
- > Stripped ribbed collar and cuffs
- > Contrast herringbone tape on back neck

34

36

38

40

42



### COLOURS



NAVY / WHITE / PINK



WHITE / NAVY / PINK

### DETAILS



COLLAR

# SIGNMEN

## SHORT SLEEVE POLO SHIRT

Pique 100% combed cotton - 200g/m<sup>2</sup>

- > Fine gauge pique in combed cotton
- > Collar and inside button placket in contrast colour
- > Contrast herringbone tape on back neck and side vents
- > Twin-needle stitching on bottom and sleeve hems

XS S M L XL XXL XXXL



### SHORT SLEEVE



### COLOURS



BLACK / RED



NAVY / PINK



PINK / NAVY



WHITE / NAVY





SIGNKIDS P.42

## SIGNWOMEN

### SHORT SLEEVE POLO SHIRT

Pique 100% combed cotton - 200g/m<sup>2</sup>

- > Fine gauge pique in combed cotton
- > Collar and inside button placket in contrast colour
- > Contrast herringbone tape on back neck and side vents
- > Twin-needle stitching on bottom and sleeve hems

34 36 38 40 42



### SHORT SLEEVE



### COLOURS



BLACK / RED



NAVY / PINK



PINK / NAVY



WHITE / NAVY

# RUGBYMEN

## LONG SLEEVE RUGBY SHIRT

Jersey 100% cotton - 280g/m<sup>2</sup>

- > Rugged jersey in open end cotton
- > Twill collar and inside placket in white
- > Triple herringbone placket with rubber buttons
- > Contrast herringbone tape on back neck and velour tape wich matches body colour
- > Rib 1x1 with elastane on cuffs

XS S M L XL XXL XXXL



### LONG SLEEVE



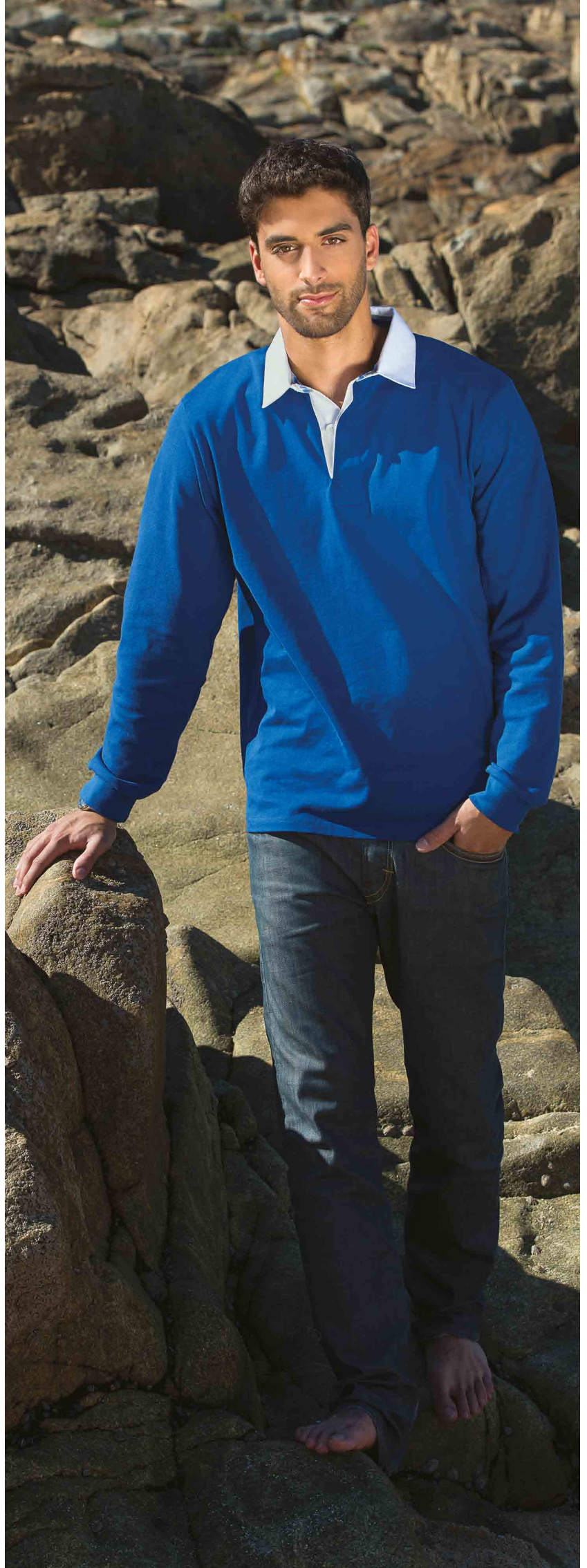
#### COLOURS

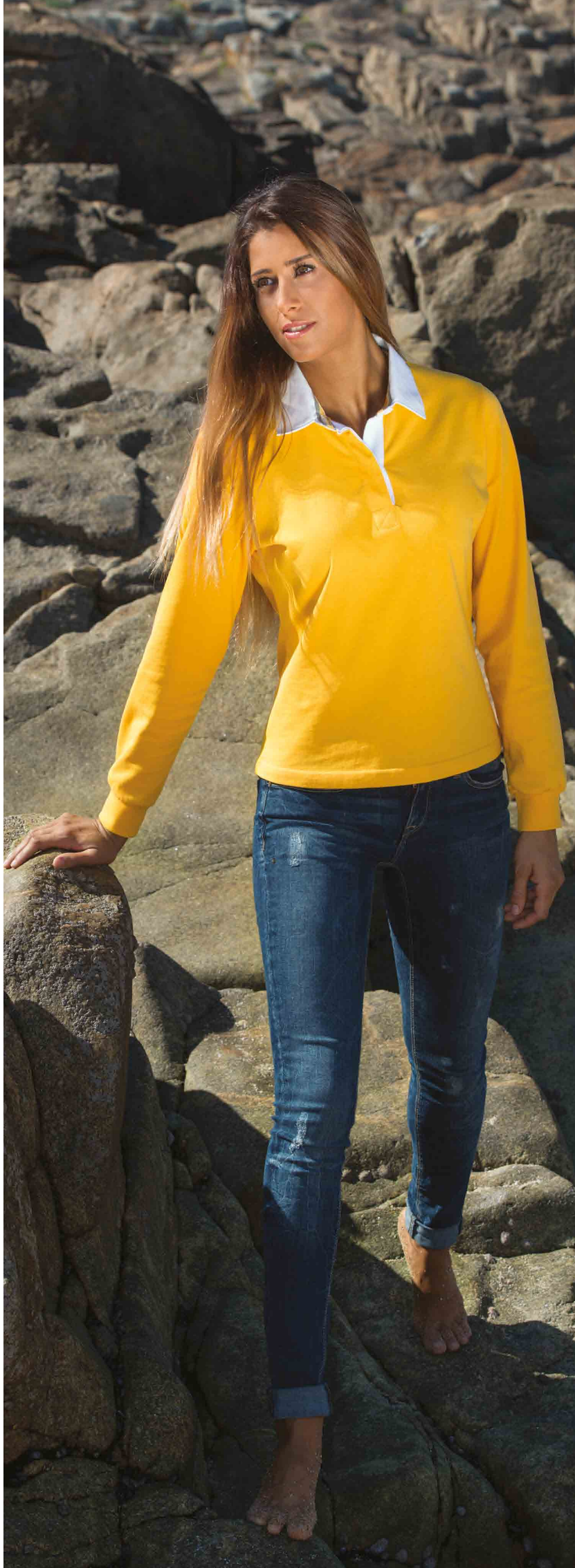
- BLACK
- DARK HEATHER GREY
- WHITE
- ROYAL
- NAVY
- BOTTLE GREEN
- BURCUNDY
- RED
- ORANGE
- YELLOW

#### DETAIL



TWILL COLLAR





RUGBYKIDS P.43

## RUGBYWOMEN

### LONG SLEEVE RUGBY SHIRT

Jersey 100% cotton - 280g/m<sup>2</sup>

- > Rugged jersey in open end cotton
- > Twill collar and inside placket in white
- > Triple herringbone placket with rubber buttons
- > Contrast herringbone tape on back neck and velour tape wich matches body colour
- > Rib 1x1 with elastane on cuffs

34 36 38 40 42



### LONG SLEEVE



### COLOURS

BLACK		BURCUNDY	
DARK HEATHER GREY		RED	
WHITE		ORANGE	
ROYAL		YELLOW	
NAVY			
BOTTLE GREEN			

### DETAIL



TWILL  
COLLAR

**We can change the colours and detail of these stock items if required. Minimum order 50.**

## FLAGMEN

### SHORT & LONG SLEEVE POLO SHIRT

Pique 100% combed cotton - 200g/m<sup>2</sup>

- > Fine gauge pique in combed cotton
- > Twill collar with tri-colour stripe effect on outer side
- > Contrast herringbone tape on back neck and side vents
- > Metal buttons on placket
- > Twin-needle stitching on bottom and sleeve hems (rib 1 x 1 with elastane on the long sleeve version)

XS S M L XL XXL XXXL



#### SHORT SLEEVE



#### COLOURS



BLACK



DARK  
HEATHER  
GREY



NAVY

WHITE

#### LONG SLEEVE







## FLAGWOMEN

### SHORT & LONG SLEEVE POLO SHIRT

Pique 100% combed cotton - 200g/m<sup>2</sup>

- > Fine gauge pique in combed cotton
- > Twill collar with tri-colour stripe effect on outer side
- > Contrast herringbone tape on back neck and side vents
- > Metal buttons on placket
- > Twin-needle stitching on bottom and sleeve hems (rib 1 x 1 with elastane on the long sleeve version)

34

36

38

40

42



#### SHORT SLEEVE



#### COLOURS



BLACK

DARK  
HEATHER  
GREY

NAVY



WHITE

#### LONG SLEEVE



# SAILMEN

## SHORT SLEEVE POLO SHIRT

Pique 100% combed cotton - 200g/m<sup>2</sup>

- > A mixture of plain colour and yarn dye
- > Tri-colour buttons on contrast inside placket
- > Contrast herringbone tape on back neck and side vents
- > Contrast binding and piping on sleeve hem
- > Contrast binding and piping on sleeve hem
- > Twin-needle stitching on bottom

XS S M L XL XXL XXXL



### SHORT SLEEVE



### DETAILS



COLLAR



SLEEVE



## SAILWOMEN

### SHORT SLEEVE POLO SHIRT

Pique 100% combed cotton - 200g/m<sup>2</sup>

- > A mixture of plain colour and yarn dye
- > Tri-colour buttons on contrast inside placket
- > Contrast herringbone tape on back neck and side vents
- > Contrast binding and piping on sleeve hem
- > Twin-needle stitching on bottom

34

36

38

40

42



### SHORT SLEEVE



### DETAILS



COLLAR



SLEEVE

**We can change the colours  
and detail of these stock  
items if required.  
Minimum order 50.**

## FLASHMEN

### SHORT SLEEVE POLO SHIRT

Pique 100% combed cotton - 200g/m<sup>2</sup>

- > Fine gauge pique in combed cotton
- > Double collar and placket, inside collar in striped twill and outer in pique; inside placket in striped twill
- > Double stripe band application on underside of collar and at bottom of sleeves
- > Contrast herringbone tape on back neck and side vents

XS S M L XL XXL XXXL



#### SHORT SLEEVE



#### COLOURS



NAVY / PINK



WHITE / NAVY

#### DETAILS



MOCK  
COLLAR



BACK NECK  
COLLAR





## LAURA WOMEN

### SLIM FIT SKIRT

Pique 95% cotton, 5% elastane 190g/m<sup>2</sup>

- > Fine gauge STRETCH pique
- > Very slim fit
- > Twin-needle stitching on bottom

34 36 38 40 42



### SLIM FIT SKIRT



### COLOURS



BLACK



NAVY



WHITE

***We can change the colours and detail of  
these stock items if required.  
Minimum order 50.***

28

---

# **JACKET**

---

MERCHANDISING COLLECTION

---

2014/2015

---



# CLUBMEN

## JACKET

Heavy sweat-fleece in 60% cotton,  
40% polyester 320g/m<sup>2</sup>

- > Collar and outside placket in twill, matching body colour
- > Nylon zip with metal buttons on front opening
- > Shoulder pleats with metal buttons
- > Front pockets with twill panels at opening
- > Top stitch on bottom rib, cuffs, neck and armhole

XS S M L XL XXL XXXL



## COLOURS



BLACK

NAVY

## DETAILS



NILON ZIP  
&  
METAL  
BUTTONS



SHOULDER  
PLEATS







## TEDDYUNISEX

### JACKET

Heavy sweat-fleece in 60% cotton, 40% polyester 320g/m<sup>2</sup>

- > Soft and comfortable inside brushed sweat fleece
- > Press buttons on placket, matching sleeve body colour
- > Stripped double ribbed cuffs, collar and bottom hem
- > Slanted pockets on either side, at the front
- > Top stitch on bottom rib, cuffs, neck and armhole

XS S M L XL XXL XXXL



### UNISEX JACKET



### COLOURS



BLACK / DARK  
HEATHER  
GREY



NAVY / WHITE



RED / WHITE

### DETAILS



PRESS  
BUTTONS



STRIPPED  
CUFF



---

# SWEAT

---

MERCHANDISING COLLECTION

---

2014/2015

---



# OSCARUNISEX

## LONG SLEEVE SWEAT SHIRT

Heavy sweat-fleece in 60% cotton, 40% polyester 320g/m²

- > Soft and comfortable inside brushed sweat fleece
- > Triangle insert at center front in rib
- > Contrast herringbone tape on back neck
- > Rib with elastane at bottom and sleeve cuffs
- > Top stitch on bottom rib, cuffs, neck and armhole

XS S M L XL XXL XXXL



### LONG SLEEVE



### COLOURS

- BLACK 
- RED 
- MEDIUM HEATHER GREY 
- FUCHSIA 
- WHITE 
- KELLY GREEN 
- ROYAL 
- NAVY 
- TURQUOISE 

### DETAIL



TRIANGLE INSERT





VIEWKIDS P.46

## VIEWUNISEX

### LONG SLEEVE SWEAT SHIRT

Heavy sweat-fleece in 60% cotton, 40% polyester 320g/m<sup>2</sup>

- > Fancy bi-colour herringbone tape on back neck
- > Wide button placket with inside in contrast colour pique fabric
- > Hood lining in pique fabric
- > Kangaroo pocket on front and rib elastane on bottom hem
- > Top stitch on bottom rib, cuffs, neck and armhole

XS S M L XL XXL XXXL



### LONG SLEEVE



### COLOURS

- BLACK   RED
- DARK HEATHER GREY 
- MEDIUM HEATHER GREY 
- WHITE 
- ROYAL 
- NAVY 

### DETAIL



HOOD LINING

# SIERRA SHORTS

## UNISEX SWEAT SHORTS

Heavy sweat-fleece in 60% cotton,  
40% polyester 320g/m<sup>2</sup>

- > Soft and comfortable inside brushed sweat fleece
- > Waistband in rib elastane with flat contrast colour drawcord
- > Side pockets with pocket having Velcro fastener to avoid objects falling out
- > Twin-needle stitching on leg opening.

XS S M L XL XXL XXXL



### COLOURS

BLACK   RED

DARK HEATHER GREY 

MEDIUM HEATHER GREY 

WHITE 

ROYAL 

NAVY 

### SHORTS



# SIERRA PANTS

## UNISEX SWEAT PANTS

Heavy sweat-fleece in 60% cotton,  
40% polyester 320g/m<sup>2</sup>

- > Soft and comfortable inside brushed sweat fleece
- > Waistband in rib elastane with flat contrast colour drawcord
- > Side pockets with pocket having Velcro fastener to avoid objects falling out
- > Twin-needle stitching on leg opening.

XS S M L XL XXL XXXL



### COLOURS

BLACK  RED   
 DARK HEATHER GREY   
 MEDIUM HEATHER GREY   
 WHITE   
 ROYAL   
 NAVY 

### PANTS





---

# KIDS

---

MERCHANDISING COLLECTION

---

2014/2015

---





# ALPHAKIDS

## SHORT & LONG SLEEVE T-SHIRT

Jersey 100% combed cotton - 160g/m<sup>2</sup>

- > Fine gauge jersey in combed cotton
- > Trendy lower rib on neck opening
- > Contrast herringbone tape on back neck
- > Slim fit on body and sleeves, keeping in line with fashion
- > Shoulder seam at the front for a better fit

5/6

7/8

9/10

11/12

13/14



### SHORT SLEEVE



### LONG SLEEVE



### COLOURS

BLACK  RED 

MEDIUM HEATHER GREY  FUCHSIA 

WHITE  KELLY GREEN 

ROYAL 

NAVY 

TURQUOISE 





## ROUTEKIDS

### SHORT & LONG SLEEVE POLO SHIRT

Pique 100% combed cotton - 200g/m<sup>2</sup>

- > Fine gauge pique in combed cotton
- > Concealed button placket
- > Shoulder seams at the front
- > Contrast herringbone tape on back neck and side vents
- > Twin-needle stitching on bottom and sleeve hems ( rib 1 x 1 with elastane on the long sleeve version )

5/6 7/8 9/10 11/12 13/14



#### SHORT SLEEVE



#### COLOURS

BLACK		RED	
MEDIUM HEATHER GREY		FUCHSIA	
WHITE		PINK	
ROYAL		ORANGE	
NAVY		KELLY GREEN	
TUROUISE		LIME	

#### LONG SLEEVE



# SIGNKIDS

## SHORT SLEEVE POLO SHIRT

Pique 100% combed cotton - 200g/m<sup>2</sup>

- > Fine gauge pique in combed cotton
- > Collar and inside button placket in contrast colour
- > Contrast herringbone tape on back neck and side vents
- > Twin-needle stitching on bottom and sleeve hems

5/6 7/8 9/10 11/12 13/14



### SHORT SLEEVE



### COLOURS



BLACK / RED



NAVY / PINK



PINK / NAVY



WHITE / NAVY





## RUGBYKIDS

### LONG SLEEVE RUGBY SHIRT

Jersey 100% cotton - 280g/m<sup>2</sup>

- > Rugged jersey in open end cotton
- > Twill collar and inside placket in white
- > Triple herringbone placket with rubber buttons
- > Contrast herringbone tape on back neck and velour tape which matches body colour
- > Rib 1x1 with elastane on cuffs

5/6 7/8 9/10 11/12 13/14



### LONG SLEEVE



### COLOURS

- |                   |  |          |  |
|-------------------|--|----------|--|
| BLACK             |  | BURCUNDY |  |
| DARK HEATHER GREY |  | RED      |  |
| WHITE             |  | ORANGE   |  |
| ROYAL             |  | YELLOW   |  |
| NAVY              |  |          |  |
| BOTTLE GREEN      |  |          |  |

# CONDORKIDS

## SHORT SLEEVE POLO SHIRT

Pique 100% combed cotton - 200g/m<sup>2</sup>

- > Fine gauge pique in combed cotton
- > Striped ribbed collar, cuffs and inside placket
- > Contrast herringbone tape on back neck and side vents
- > Tri-colour buttons on placket

5/6 7/8 9/10 11/12 13/14



### COLOURS



NAVY / WHITE / PINK



WHITE / NAVY / PINK





## STELLAKIDS

### SHORT SLEEVE POLO DRESS

Pique 95% combed cotton, 5% elastane  
190g/m<sup>2</sup>

- > Fine gauge STRETCH pique
- > Narrow button placket in twill
- > Tri-colour buttons on placket
- > Stripped ribbed collar and cuffs
- > Contrast herringbone tape on back neck

5/6

7/8

9/10

11/12

13/14



### COLOURS



NAVY / WHITE / PINK



WHITE / NAVY / PINK

## VIEWKIDS

### LONG SLEEVE SWEAT SHIRT

Heavy sweat-fleece in 60% cotton,  
40% polyester 320g/m<sup>2</sup>

- > Fancy bi-colour herringbone tape on back neck
- > Wide button placket with inside in contrast colour pique fabric
- > Hood lining in pique fabric
- > Kangaroo pocket on front and rib elastane on bottom hem
- > Top stitch on bottom rib, cuffs, neck and armhole

5/6 7/8 9/10 11/12 13/14



#### COLOURS

#### LONG SLEEVE

BLACK   RED

DARK HEATHER GREY 

MEDIUM HEATHER GREY 

WHITE 

ROYAL 

NAVY 



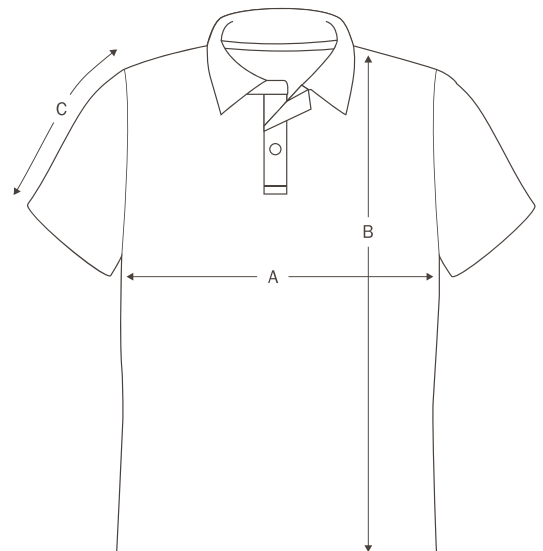


# SIZE CHARTS

ESSENCIAL MESUREMENTS IN CM

		MEN							WOMEN					
		XS	S	M	L	XL	XXL	3XL	34	36	38	40	42	
<b>T-SHIRT</b>	<b>A</b>	CHEST	46,0	48,0	50,0	52,5	55,0	58,0	61,0	39,0	42,0	45,0	49,0	52,0
	<b>B</b>	LENGHT	64,0	67,5	70,0	72,5	75,0	77,5	80,0	63,5	65,0	67,0	69,0	71,0
	<b>C</b>	SLEEVE	9,0	9,5	10,0	10,5	11,5	12,5	13,5	12,5	13,5	14,5	15,5	16,5
<b>POLO SHIRT</b>	<b>A</b>	CHEST	47,0	50,0	52,0	54,0	58,0	62,0	66,0	39,0	42,0	45,0	49,0	52,0
	<b>B</b>	LENGHT	66,5	69,0	71,5	74,0	76,5	79,0	82,0	63,5	65,0	67,0	69,0	71,0
	<b>C</b>	SLEEVE	18,0	19,0	20,0	21,0	22,0	23,5	25,5	12,5	13,5	14,5	15,5	16,5
<b>RUGBY SHIRT</b>	<b>A</b>	CHEST		52,0	55,0	58,0	61,0	65,0	69,0	45,0	47,0	49,0	51,0	54,0
	<b>B</b>	LENGHT		69,0	72,0	75,0	78,0	81,0	83,0	61,5	63,0	65,0	67,0	69,0
	<b>C</b>	SLEEVE		61,5	62,5	64,0	65,5	67,0	68,5	59,0	60,0	61,0	62,0	63,5
<b>SWEATSHIRT</b>	<b>A</b>	CHEST		52,0	55,0	58,0	61,0	65,0	69,0	44,0	46,0	48,0	52,0	55,0
	<b>B</b>	LENGHT		68,0	70,0	72,0	74,0	76,5	79,0	61,0	63,0	65,0	67,0	69,0
	<b>C</b>	SLEEVE		64,0	66,0	68,0	70,0	72,0	74,0	60,0	61,0	62,0	64,0	66,0

		KIDS					
		5/6	7/8	9/10	11/12	13/14	
<b>T-SHIRT</b>	<b>A</b>	CHEST	36,0	38,0	40,0	43,0	45,0
	<b>B</b>	LENGHT	46,0	50,0	54,0	58,0	62,0
	<b>C</b>	SLEEVE	15,0	16,0	17,0	18,0	19,0
<b>POLO SHIRT</b>	<b>A</b>	CHEST	35,0	38,0	40,0	43,0	45,0
	<b>B</b>	LENGHT	46,0	50,0	54,0	58,0	62,0
	<b>C</b>	SLEEVE	13,0	14,0	15,0	16,0	17,0
<b>RUGBY SHIRT</b>	<b>A</b>	CHEST	35,0	38,0	40,0	43,0	45,0
	<b>B</b>	LENGHT	46,0	50,0	54,0	58,0	62,0
	<b>C</b>	SLEEVE	40,0	44,0	49,0	52,0	55,0
<b>SWEATSHIRT</b>	<b>A</b>	CHEST	39,0	41,0	43,0	45,0	47,0
	<b>B</b>	LENGHT	47,0	51,0	55,0	62,0	63,5
	<b>C</b>	SLEEVE	39,0	43,0	48,0	53,0	58,0



# BESPOKE

FULL BESPOKE SERVICE



## YOUR BRAND, YOUR STYLE, OUR QUALITY

100% MADE IN EUROPE

ALL THESE STOCK PRODUCTS ARE MANUFACTURED IN OUR PORTUGUESE FACTORY, FROM YARN TO READY-MADE GARMENT.

HOWEVER, WE CAN ALSO PRODUCE YOUR OWN DESIGNS, YOUR PANTONE COLOUR CHOICES, AS WELL AS ALL TYPES OF CUSTOMIZATIONS:

- LABELS -
- BACK NECK TAPES -
- ZIP PULLERS -
- HANGTAGS -
- EMBROIDERY -
- PRINTS -
- ALL-OVER SUBLIMATION PRINTS -
- ALL-OVER DIGITAL PRINTS -

*Be different,  
be yourself !*



# FABRICS & COLOURS

TABLE OF OUR STOCK FABRICS AND COLOURS

	B L A C K	S T O R M G R E Y	D A R K H E A T H E R G R E Y	M E D I U M H E A T H E R G R E Y	W H I T E	N A V Y	D A R K R O Y A L	B R I G H T R O Y A L	T U R Q U O I S E	S K Y B L U E	B O T T L E G R E E N	K E L L Y G R E E N	L I M E	B U R G U N D Y	D A R K R E D	R E D	N E W P I N K	F U S C H I A	O R A N G E	Y E L L O W
<b>PANTONE</b>																				
<b>LIGHT JERSEY</b> 110gm <sup>2</sup>	•			•	•	•			•					•		•		•		
<b>SINGLE JERSEY</b> 160gm <sup>2</sup>	•	•	•	•	•	•		•	•	•	•	•	•	•	•	•	•	•	•	•
<b>HEAVY JERSEY</b> 280gm <sup>2</sup>	•	•	•		•	•		•		•	•	•		•		•	•		•	•
<b>PIQUE</b> 200gm <sup>2</sup>	•	•	•	•	•	•		•	•	•	•	•	•	•	•	•	•	•	•	•
<b>SWEAT FLEECE</b> 320gm <sup>2</sup>	•	•	•	•	•	•		•	•	•	•	•	•	•		•	•	•	•	•

## Pantone Dye Fabric To Your Requirements

If you do not see the colour you require we can pantone dye fabric and manufacture the garment for you.

Usually the minimum order is 250 for pantone dyed garments.

100% MADE IN EUROPE



[www.impacttrading.co.uk](http://www.impacttrading.co.uk)

MERCHANDISING

VINTAGE

CORPORATE

PREMIUM



UNIÃO EUROPEIA

Fundo Europeu de Desenvolvimento Regional