



2016



Shirt & Blouse - Sophisticated - Performance - Corporate Fashion - Concept - One - Mix & Match

CONTENTS

COMPANY Information

pages 04 - 05

SHIRT & BLOUSE Collection – Contemporary business shirts and blouses

pages 06 - 43

- Co-ordinating men's and women's business shirts and blouses
- Large choice of fabrics, fits & styles
- Ideal for all corporate arenas

SOPHISTICATED Collection – Premium lightweight tailoring

pages 44 - 71

- 54% Polyester, 44% Wool, 2% Lycra
- 270gm fabric, Nanotech stain-resistant finish
- Ideal for management, financial/banking sectors, hotels, front of house

PERFORMANCE Collection – Superb mid-weight high performance tailoring

pages 72 - 101

- 65% Polyester, 35% Wool with Shape Memory Technology
- 325gm crease-resistant fabric
- Ideal for hotels, hospitality, councils, FM & security

CORPORATE FASHION Collection – Lightweight business tailoring

pages 102 - 119

- 67% Polyester, 30% Wool, 3% Lycra weft stretch
- 270gm fabric, Nanotech stain-resistant finish
- Ideal for boutique hotels, bars & retailers

CONCEPT Collection – Durable heavier weight corporate suiting

pages 120 - 135

- 65% Polyester, 35% Viscose
- 390gm fabric with Stain Defence Treatment
- Ideal for FM, security, transport, hospitality, health sector

ONE Collection – Mid-weight entry level collection

pages 136 - 149

- 100% Superfine Polyester
- 335gm fabric
- Ideal for hospitality, schools, FM & health sector

MIX & MATCH Collection – Classic menswear – Timeless men's formalwear – Women's coat

pages 150 - 157

GARMENT allocation guidelines

pages 158 - 159



BROOK TAVERNER CSR

Brook Taverner works with some of the best fabric mills in the world and ensures that all clothing is made in ethically sound factories. We strive to ensure that all fabrics used meet Oeko-Tex Standard 100 environmental requirements.

We make certain our supply chain commits to the ETI Base Code. This worldwide recognised code promotes respect for workers' rights and aims to ensure they are free from discrimination and exploitation & enjoy conditions of freedom, security and equality. Our factories undergo Sedex and SMETA audits on an annual basis to confirm that the ETI Base Code is being adhered to.

Further information on our CSR policy can be found on our website

www.brooktaverner.com

Further information can be found on

www.ethicaltrade.org

www.sedexglobal.com



STOCK supported

More and more end users are turning to stock supported corporatewear ranges - it's easy to see why:

- Brook Taverner Ltd holds stock to the value of £7 million.
- No minimum order requirements - you only pay for what your business needs
- Tried and tested styles and fabrics – benefit from the optimum lifespan and value from your corporatewear
- Greater choice - mix and match collections with a market-leading range of sizes and fittings mean wearers can choose styles and colours which make them look and feel professional
- Save time - in stock means fast delivery and no minimum reorder quantities
- Save money - no fabric to underwrite and no garment stock to pay for up front or at the end of the contract
- Garments ultimately have a lower unit cost



Our collections offer:

- Increased wearer comfort
- Longevity of wear
- Unrivalled performance
- Greater crease recovery
- Greater abrasion resistance
- Exceptional levels of colour continuity

FABRIC & CONSTRUCTION



SHIRT & BLOUSE COLLECTION

This 29 piece collection offers:



MEN'S

PREMIUM COTTON - EASY IRON

ANDORA Classic fit, Double cuff	08 - 09 - 10 - 14 - 15
ALTARE Classic fit, Single cuff	08 - 09 - 10 - 11
PRATO Slim fit, Double cuff	08 - 09 - 10 - 11

PREMIUM COTTON - EASY IRON

CHESTER Classic fit, Double cuff	18
CHEADLE Classic fit, Single cuff	18
CHELFORD Slim Fit, Double cuff	19

STRETCH COTTON BLEND - EASY IRON

PISA Slim fit, Single cuff	24 - 25
LUCCA Slim fit, Single cuff	28 - 29

COTTON RICH - EASY IRON

RAPINO Classic fit, Single cuff	30
ALBA Slim fit, Single cuff	32 - 33
ROSELLO Classic fit, Short sleeve	34 - 35
RUFINA Classic fit, Single cuff	36 - 37
ROCELLA Classic fit, Short sleeve	38 - 39
MANTOVA Classic fit, Single cuff	40 - 41
SAVONA Classic fit, Short sleeve	42 - 43

WOMEN'S

PREMIUM COTTON - EASY IRON

VILLETA Semi fitted, Double cuff	08 - 09 - 12 - 13 - 14
OZZERO Semi fitted, Short sleeve	08 - 09 - 13

PREMIUM COTTON - EASY IRON

TREVISO Semi fitted, Single cuff	16 - 17
----------------------------------	---------

CREPE DE CHINE

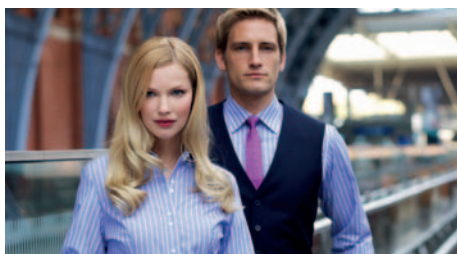
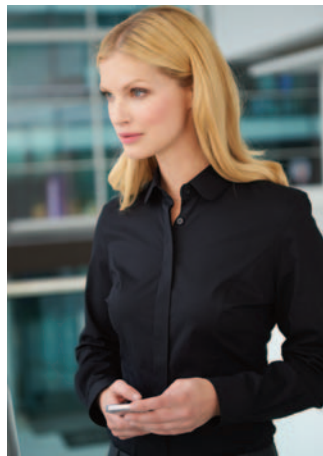
FELINA Short sleeve blouse	20 - 21
RIOLA Long sleeve blouse	20 - 21

STRETCH COTTON BLEND - EASY IRON

TREVI Semi fitted, Single cuff	22 - 23
SOAVE Semi fitted, Short sleeve	22 - 23
FRANCA Semi fitted, Single cuff	26 - 27

COTTON RICH - EASY IRON

PALENA Semi fitted, Single cuff	30 - 31
PADULI Semi fitted, Short sleeve	34 - 35
PERANO Semi fitted, Single cuff	36 - 37
PESCARA Semi fitted, Short sleeve	38 - 39
CAMPANIA Semi fitted, Single cuff	40 - 41
LIGURIA Semi fitted, Short sleeve	42 - 43



SHIRT & BLOUSE COLLECTION

PREMIUM COTTON - CREPE DE CHINE - STRETCH COTTON BLEND - COTTON RICH



- Co-ordinating men's and women's business shirts and blouses
- Large choice of fabrics, fits & styles
- Ideal for all corporate arenas

PREMIUM COTTON



100% SUPERFINE COTTON - EASY IRON

MEN'S **ANDORA** Classic fit, Double cuff **ALTARE** Classic fit, Single cuff **PRATO** Slim fit, Double cuff
WOMEN'S **VILLETA** Semi fitted, Double cuff **OZZERO** Semi fitted, Short sleeve

- Double cuff with complementary silk cuff knots (except Altare & Ozzero)
- Taped seams
- Removable metal collar stiffeners (men's shirts)
- Men's extra long sleeve available



A. White Herringbone

E. Pink/Grey Stripe

VILLETA Blouse (shown)
(Semi fitted, Double cuff)

Codes & Colours:

2247A White Herringbone
2247B Blue Herringbone
2247C Charcoal/White Stripe
2247D Raspberry Stripe
2247E Pink/Grey Stripe

Sizes: 6 - 24 regular

OZZERO Blouse
(Semi fitted, Short sleeve)

Codes & Colours:

2249A White Herringbone
2249B Blue Herringbone

Sizes: 6 - 24 regular

PRATO shirt
(Slim fit, Double cuff)

Codes & Colours:
7720A White Herringbone
7720B Blue Herringbone

Sizes: 14.5" - 18"

ANDORA Shirt (shown)
(Classic fit, Double cuff)

Codes & Colours:
7656A White Herringbone
7656AL White Herringbone
Extra long sleeve 36.5"
7656B Blue Herringbone
7656BL Blue Herringbone
Extra long sleeve 36.5"
7656C Charcoal/White Stripe
7656D Raspberry Stripe
7656E Pink/Grey Stripe

Sizes: 14.5" - 20"
* Extra long sleeve 36.5" at size 15.5"

ALTARE Shirt
(Classic fit, Single cuff)

Codes & Colours:
7655A White Herringbone
7655AL White Herringbone
Extra long sleeve 36.5"
7655B Blue Herringbone
7655BL Blue Herringbone
Extra long sleeve 36.5"

Sizes: 14.5" - 20"
* Extra long sleeve available from size 15"



B. Blue Herringbone

C. Charcoal/White Stripe

D. Raspberry Stripe



PRATO Shirt
(Slim fit, Double cuff)



ANDORA Shirt
(Classic fit, Double cuff)



ALTARE Shirt
(Classic fit, Single cuff)



VILLETA Blouse
(Semi fitted, Double cuff)



OZZERO Blouse
(Semi fitted, Short sleeve)

PREMIUM COTTON



100% SUPERFINE COTTON - HERRINGBONE WEAVE - EASY IRON

MEN'S **ANDORA** Classic fit, Double cuff **ALTARE** Classic fit, Single cuff **PRATO** Slim fit, Double cuff

- Double cuff with complementary silk cuff knots (except Altare)
- Taped seams
- Removable metal collar stiffeners
- Men's extra long sleeve available



ANDORA Shirt
(Classic fit, Double cuff)



ALTARE Shirt
(Classic fit, Single cuff)



PRATO Shirt
(Slim fit, Double cuff)

ANDORA Shirt
(Classic fit, Double cuff)

Codes & Colours:

- 7656A White Herringbone
- 7656AL White Herringbone
Extra long sleeve 36.5"
- 7656B Blue Herringbone
- 7656BL Blue Herringbone
Extra long sleeve 36.5"
- 7656C Charcoal/White Stripe
- 7656D Raspberry Stripe
- 7656E Pink/Grey Stripe

Sizes: 14.5" - 20"

* Extra long sleeve 36.5" at size 15.5"

**ANDORA is also available
in 3 striped designs.**

See pages 14 and 15
for more information.

ALTARE Shirt
(Classic fit, Single cuff)

Codes & Colours:

- 7655A White Herringbone
- 7655AL White Herringbone
Extra long sleeve 36.5"
- 7655B Blue Herringbone
- 7655BL Blue Herringbone
Extra long sleeve 36.5"

Sizes: 14.5" - 20"

* Extra long sleeve 36.5" at size 15.5"

PRATO shirt
(Slim fit, Double cuff)

Codes & Colours:

- 7720A White Herringbone
- 7720B Blue Herringbone

Sizes: 14.5" - 18"

PREMIUM COTTON



100% SUPERFINE COTTON - HERRINGBONE WEAVE - EASY IRON

WOMEN'S **VILLETA** Semi fitted, Double cuff

WOMEN'S **OZZERO** Semi fitted, Short sleeve

- Double cuff with complementary silk cuff knots (except Ozzero)
- Taped seams



VILLETA Blouse
(Semi fitted, Double cuff)



OZZERO Blouse
(Semi fitted, Short sleeve)

VILLETA Blouse
(Semi fitted, Double cuff)

Codes & Colours:

2247A White Herringbone
2247B Blue Herringbone
2247C Charcoal/White Stripe
2247D Raspberry Stripe
2247E Pink/Grey Stripe

Sizes: 6 - 24 regular

OZZERO Blouse
(Semi fitted, Short sleeve)

Codes & Colours:

2249A White Herringbone
2249B Blue Herringbone

Sizes: 6 - 24 regular



VILLETA Blouse
(Semi fitted, Double cuff)



OZZERO Blouse
(Semi fitted, Short sleeve)



PREMIUM COTTON

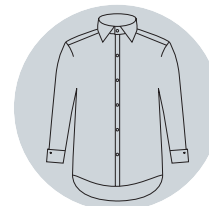


100% SUPERFINE COTTON - STRIPED DESIGNS - EASY IRON

MEN'S **ANDORA** Classic fit, Double cuff

WOMEN'S **VILLETA** Semi fitted, Double cuff

- Double cuff with complementary silk cuff knots
- Taped seams
- Removable metal collar stiffeners (men's shirts)



ANDORA Shirt
(Classic fit, Double cuff)



VILLETA Blouse
(Semi fitted, Double cuff)



D. Raspberry Stripe

ANDORA Shirt
(Classic fit, Double cuff)

Codes & Colours:

7656A	White Herringbone
7656AL	White Herringbone Extra long sleeve 36.5"
7656B	Blue Herringbone
7656BL	Blue Herringbone Extra long sleeve 36.5"
7656C	Charcoal/White Stripe
7656D	Raspberry Stripe
7656E	Pink/Grey Stripe

Sizes: 14.5" - 20"

* Extra long sleeve 36.5" at size 15.5"

VILLETA Blouse
(Semi fitted, Double cuff)

Codes & Colours:

2247A	White Herringbone
2247B	Blue Herringbone
2247C	Charcoal/White Stripe
2247D	Raspberry Stripe
2247E	Pink/Grey Stripe

Sizes: 6 - 24 regular



C. Charcoal/White Stripe



D. Raspberry Stripe



E. Pink/Grey Stripe

PREMIUM COTTON



100% SUPERFINE COTTON - EASY IRON - LONG SLEEVE

WOMEN'S **TREVISIO** Semi fitted, Single cuff

- Single 3 button cuff
- Classic button up collar



A. White

B. Blue

TREVISIO Blouse
(Semi fitted, Single cuff)

Codes & Colours:

2244A White
2244B Blue

Sizes: 6 - 24 regular



TREVISIO Blouse
(Semi fitted, Single cuff)

CHESTER Shirt
(Classic fit, Double cuff)



TREVISIO blouse matches CHESTER, CHEADLE & CHELFORD shirts.
See pages 18 and 19 for more information.

PREMIUM COTTON



100% SUPERFINE COTTON - EASY IRON - LONG SLEEVE

MEN'S **CHESTER** Classic fit, Double cuff

MEN'S **CHEADLE** Classic fit, Single cuff

MEN'S **CHELFORD** Slim fit, Double cuff

- Taped seams
- Removable metal collar stiffeners
- Men's extra long sleeve available



CHESTER Shirt
(Classic fit, Double cuff)

Codes & Colours:

7642A White
7642B Blue

Sizes: 14.5" - 20"



CHESTER Shirt
(Classic fit, Double cuff)



CHEADLE Shirt
(Classic fit, Single cuff)

Codes & Colours:

7641A White
7641AL White
Extra long sleeve 36.5"
7641B Blue

Sizes: 14.5" - 20"
* Extra long sleeve 36.5" at size 15.5"



CHEADLE Shirt
(Classic fit, Single cuff)

CLASSIC FIT

All match **TREVISIO** blouse.
See pages 16 and 17 for more information.

CREPE DE CHINE



94% Polyester / 6% Elastane CREPE DE CHINE - SHORT & LONG SLEEVE

WOMEN'S **FELINA** Short sleeve

WOMEN'S **RIOLA** Long sleeve

- Short & long sleeve ladies' blouse, round neck, front pleat detail, bust darts
- Single gold button cuff (Riola)
- Rear gold zip detail
- Easy care, machine washable at 30°



B. Cream

FELINA Blouse
(Short sleeve)

Codes & Colours:

2265A White
2265B Cream

Sizes: 6 - 30 regular



FELINA Blouse
(Short sleeve)

RIOLA Blouse
(Long sleeve)

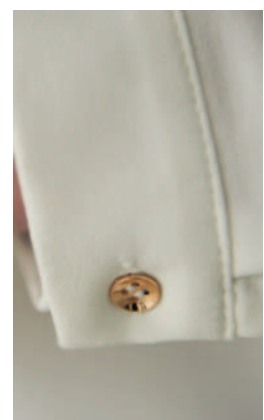
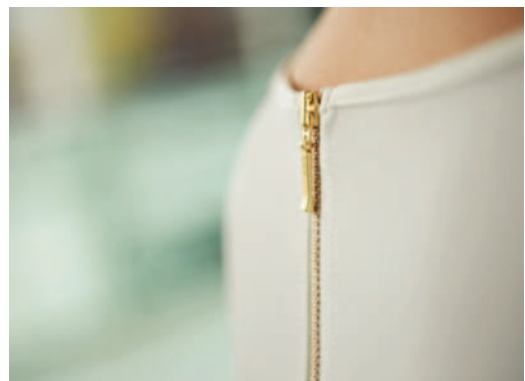
Codes & Colours:

2264A White
2264B Cream

Sizes: 6 - 30 regular



RIOLA Blouse
(Long sleeve)



Back collar zip and button cuff detail

STRETCH COTTON BLEND



57% Polyester / 39% Cotton / 4% Elastane - EASY IRON

WOMEN'S **TREVI** Semi fitted, Long sleeve, Single cuff

WOMEN'S **SOAVE** Semi fitted, Short sleeve

- Fly front
- Rounded collar
- Single button cuff (Trevi)



NEW TREVI & SOAVE SEMI FITTED



TREVI Blouse
(Semi fitted, Single cuff)



SOAVE Blouse
(Semi fitted, Short sleeve)



A. White



B. Sky Blue



D. Black

TREVI Blouse
(Semi fitted, Single cuff)

Codes & Colours:

2268A White
2268B Sky Blue
2268D Black

Sizes: 6 - 24 regular

SOAVE Blouse
(Semi fitted, Short sleeve)

Codes & Colours:

2269A White
2269B Sky Blue
2269D Black

Sizes: 6 - 24 regular



TREVI & SOAVE blouses match men's PISA shirt.
See pages 24 and 25 for more information.

STRETCH COTTON BLEND



57% Polyester / 39% Cotton / 4% Elastane - EASY IRON - LONG SLEEVE

MEN'S PISA Slim fit, Long sleeve, Single cuff

- Single 2 button cuff
- Twin rear darts for defined silhouette



A. White



B. Sky Blue



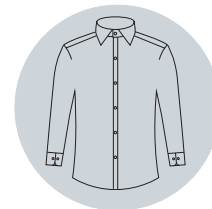
D. Black

PISA Shirt
(Slim fit, Single cuff)

Codes & Colours:

7721A White
7721B Sky Blue
7721D Black

Sizes: 14.5" - 18"



PISA Shirt
(Slim fit, Single cuff)

PISA shirt matches women's TREVI & SOAVE blouses.
See pages 22 and 23 for more information.

STRETCH COTTON BLEND



57% Polyester / 39% Cotton / 4% Elastane - EASY IRON - LONG SLEEVE

WOMEN'S FRANCA Semi fitted, Single cuff

- Fly front
- Contrast White rounded collar and contrast White single button cuff



SEMI FITTED
CONTRAST SINGLE CUFF

FRANCA Blouse
(Semi fitted, Single cuff)

Codes & Colours:

- 2251A White with front panel stripe
- 2251B Sky Blue
- 2251C Blue Stripe
- 2251D Lilac Stripe
- 2251E Red Stripe

Sizes: 6 - 24 regular

FRANCA blouse matches men's LUCCA shirt.
See pages 28 and 29 for more information.



A. White with
front panel stripe



FRANCA Blouse
(Semi fitted, Single cuff)

STRETCH COTTON BLEND



57% Polyester / 39% Cotton / 4% Elastane - EASY IRON - LONG SLEEVE

MEN'S LUCCA Slim fit, Single cuff

- Contrast White collar with single 2 button cuff
- Twin rear darts for defined silhouette

LUCCA Shirt
(Slim fit, Single cuff)

Codes & Colours:

7658B Sky Blue
7658C Blue stripe
7658D Lilac stripe
7658E Red stripe

Sizes: 14.5" - 18"



B. Sky Blue

C. Blue Stripe

D. Lilac Stripe

E. Red Stripe

LUCCA shirt matches women's FRANCA blouse.
See pages 26 and 27 for more information.

COTTON RICH



55% Cotton / 45% Polyester - EASY IRON - LONG SLEEVE

MEN'S **RAPINO** Classic fit, Single cuff

WOMEN'S **PALENA** Semi fitted, Single cuff

- Chest pocket (Rapino)
- Single 2 button cuff (Palena)



CLASSIC FIT

SINGLE CUFF



SEMI FITTED

SINGLE CUFF

RAPINO Shirt
(Classic fit, Single cuff)

Codes & Colours:

7539A White
7539B Pink
7539D Black
7539E Blue

Sizes: 14.5" - 20"



RAPINO Shirt
(Classic fit, Single cuff)

PALENA Blouse
(Semi fitted, Single cuff)

Codes & Colours:

2214A White

2214E Blue

Sizes: 4 - 30 regular

Codes & Colours:

2214B Pink

2214D Black

Sizes: 6 - 24 regular



PALENA Blouse
(Semi fitted, Single cuff)

EXTENDED SIZE RANGE
NOW AVAILABLE



A. White

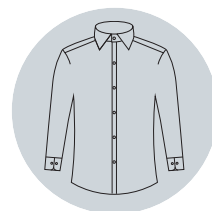
B. Pink

E. Blue

D. Black

RAPINO shirt & PALENA blouse match
men's ALBA & ROSELLO shirts and women's PADULI blouse.
See pages 32, 33, 34 and 35 for more information.

COTTON RICH



ALBA Shirt
(Slim fit, Single cuff)

55% Cotton / 45% Polyester - EASY IRON - LONG SLEEVE

MEN'S ALBA Slim fit, Single cuff

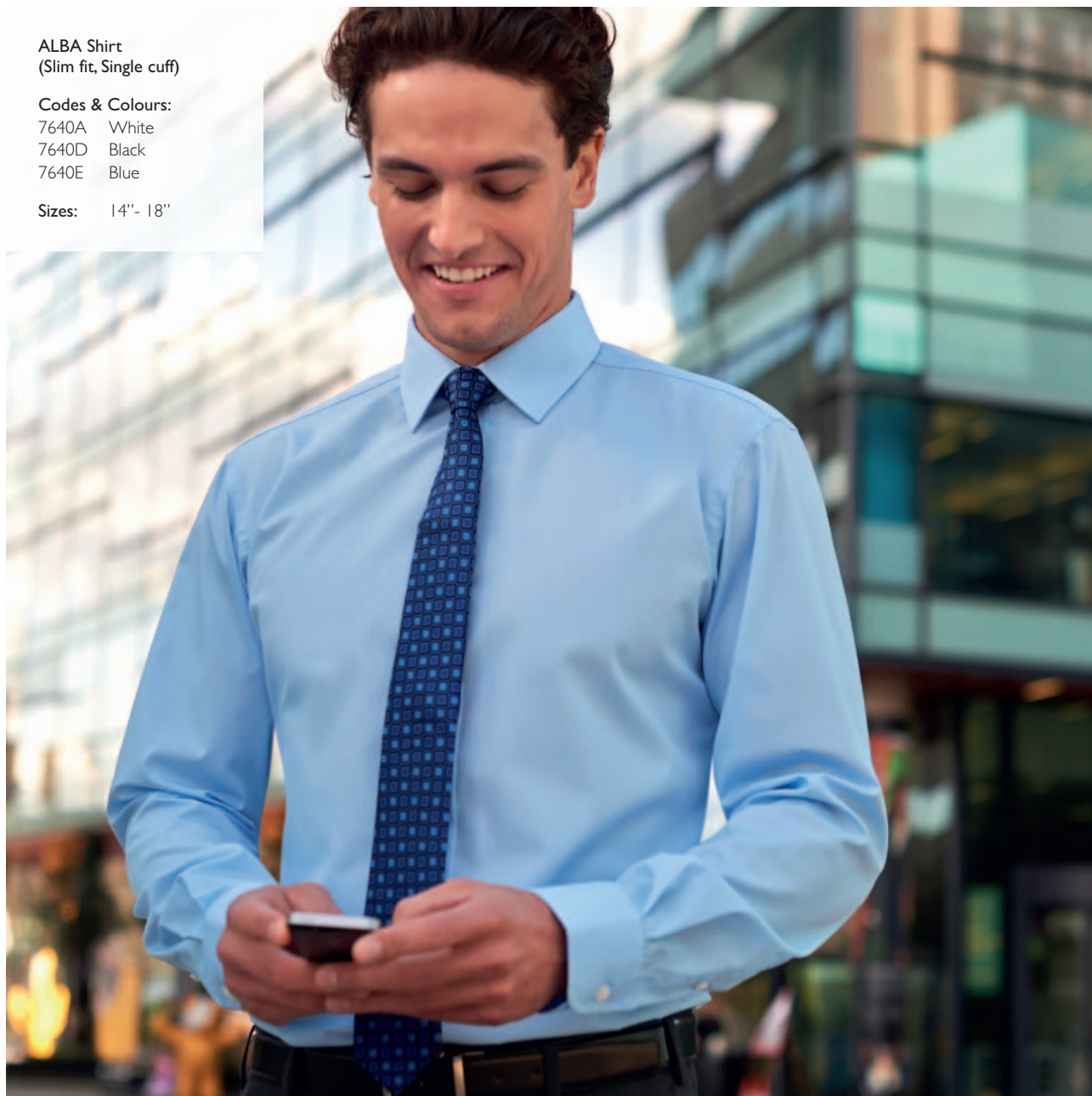
- Twin rear darts for defined silhouette
- Semi cutaway collar

ALBA Shirt
(Slim fit, Single cuff)

Codes & Colours:

7640A White
7640D Black
7640E Blue

Sizes: 14" - 18"



ALBA shirt matches men's RAPINO & ROSELLO shirts and women's PALENA & PADULI blouses.
See pages 30, 31, 34 and 35 for more information.

COTTON RICH



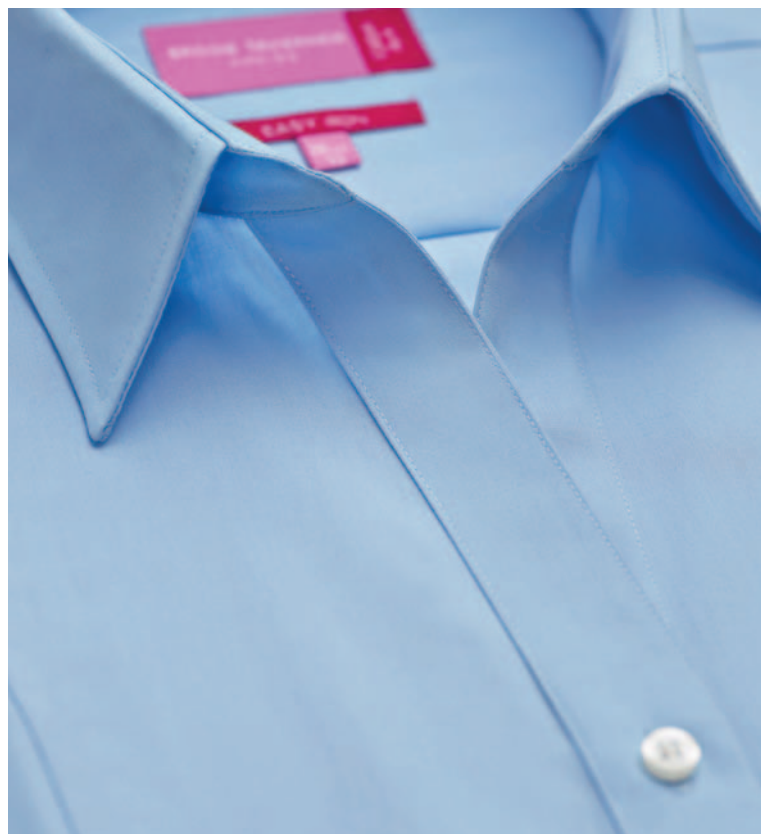
55% Cotton / 45% Polyester - EASY IRON - SHORT SLEEVE

WOMEN'S **PADULI** Semi fitted, Short sleeve

MEN'S **ROSELLO** Classic fit, Short sleeve

- Chest pocket (Rosello)
- Short sleeve with adjustable cuff (Paduli)

E. Blue



PADULI Blouse
(Semi fitted, Short sleeve)

Codes & Colours:

2216A White
2216E Blue

Sizes: 4 - 30 regular

Codes & Colours:

2216B Pink
2216D Black

Sizes: 6 - 24 regular

ROSELLO Shirt
(Classic fit, Short sleeve)

Codes & Colours:

7541A White
7541B Pink
7541D Black
7541E Blue

Sizes: 14.5" - 20"

EXTENDED SIZE RANGE NOW AVAILABLE



PADULI Blouse
(Semi fitted, Short sleeve)



ROSELLO Shirt
(Classic fit, Short sleeve)



B. Pink PADULI adjustable cuff detail



A. White



D. Black

PADULI blouse & ROSELLO shirt match men's ALBA & RAPINO shirts & women's PALENA blouse.
See pages 30, 31, 32 and 33 for more information.

COTTON RICH

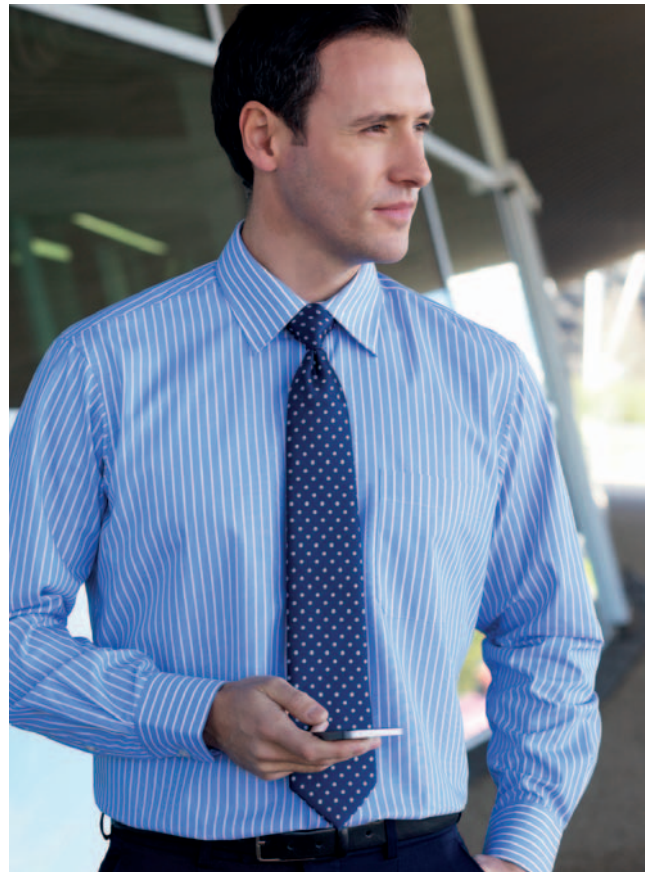


60% Cotton / 40% Polyester - EASY IRON - LONG SLEEVE

WOMEN'S **PERANO** Semi fitted, Single cuff

MEN'S **RUFINA** Classic fit, Single cuff

- Chest pocket (Rufina)
- Single 2 button cuff (Perano)



A. White/Grey Stripe



B. Pink/Grey Stripe



C. Blue/White Stripe

PERANO Blouse
(Semi fitted, Single cuff)

Codes & Colours:

- 2215A White/Grey Stripe
- 2215B Pink/Grey Stripe
- 2215C Blue/White Stripe

Sizes: 6 - 24 regular

RUFINA Shirt
(Classic fit, Single cuff)

Codes & Colours:

- 7540A White/Grey Stripe
- 7540B Pink/Grey Stripe
- 7540C Blue/White Stripe

Sizes: 14.5" - 20"



PERANO Blouse
(Semi fitted, Long sleeve)



RUFINA Shirt
(Classic fit, Long sleeve)



PERANO blouse & RUFINA shirt match PESCARA blouse & ROCCELLA shirt.
See pages 38 and 39 for more information.

COTTON RICH



60% Cotton / 40% Polyester - EASY IRON - SHORT SLEEVE

WOMEN'S **PESCARA** Semi fitted, Short sleeve

MEN'S **ROCCELLA** Classic fit, Short sleeve

- Chest pocket (Roccella)
- Short sleeve with adjustable cuff (Pescara)



PESCARA Blouse
(Semi fitted, Short sleeve)

A. White/Grey Stripe



C. Blue/White Stripe



PESCARA blouse & ROCCELLA shirt match PERANO blouse & RUFINA shirt.
See pages 36 and 37 for more information.

COTTON RICH



MANTOVA shirt &
CAMPANIA blouse
match SAVONA shirt
& LIGURIA blouse
See pages 42 and 43
for more information.

60% Cotton / 40% Polyester - EASY IRON - LONG SLEEVE

MEN'S **MANTOVA** Classic fit, Single cuff

WOMEN'S **CAMPANIA** Semi fitted, Single cuff

- Chest pocket (Mantova)
- Contrast inner collar and cuff (colours B, C & D only)
- Double button fastening (Campania)

MANTOVA Shirt
(Classic fit, Single cuff)

Codes & Colours:

- 7594A White Waffle Weave
- 7594B Sky Blue/Magenta Stripe
- 7594C Black/White Stripe

Sizes: 14.5"- 20"



MANTOVA Shirt
(Classic fit, Single cuff)



A. White Waffle Weave



B. Sky Blue/Magenta Stripe

CAMPANIA Blouse
(Semi fitted, Single cuff)

Codes & Colours:

- 2239A White Waffle Weave
- 2239B Sky Blue/Magenta Stripe
- 2239C Black/White Stripe
- 2239D Candy Stripe

Sizes: 6 - 24 regular



CAMPANIA Blouse
(Semi fitted, Single cuff)



C. Black/White Stripe



D. Candy Stripe
(Campania & Liguria only)

COTTON RICH



60% Cotton / 40% Polyester - EASY IRON - SHORT SLEEVE

MEN'S **SAVONA** Classic fit, Short sleeve

WOMEN'S **LIGURIA** Semi fitted, Short sleeve

- Chest pocket (Savona)
- Contrast inner collar and cuff (colours B, C & D only)
- Short sleeve with 2 button cuff detail (Liguria)

CONTRAST INTERNAL COLLAR & CUFF



SAVONA Shirt
(Classic fit, Short sleeve)

Codes & Colours:

7595A White Waffle Weave
7595B Sky Blue/Magenta Stripe
7595C Black/White Stripe

Sizes: 14.5" - 20"

LIGURIA Blouse
(Semi fitted, Short sleeve)

Codes & Colours:

2240A White Waffle Weave
2240B Sky Blue/Magenta Stripe
2240C Black/White Stripe
2240D Candy Stripe

Sizes: 6 - 24 regular



SAVONA Shirt
(Classic fit, Short sleeve)



LIGURIA Blouse
(Semi fitted, Short sleeve)





A. White Waffle Weave



B. Sky Blue/Magenta Stripe



C. Black/White Stripe



D. Candy Stripe
(Campania & Liguria only)

SAVONA shirt & LIGURIA blouse match MANTOVA shirt & CAMPANIA blouse.
See pages 40 and 41 for more information.

SOPHISTICATED COLLECTION

18 piece collection in a choice of up to 7 colours

WOMEN'S

CALVI Jacket	52 - 53
BRONTE Skirt	52
GENOA Trouser	53
SCAPOLI Waistcoat	53
NOVARA Jacket	54 - 55
NUMANA Skirt	54 - 55
SUSA Jacket	56 - 57
MIRANDA Trouser	56 - 57
OPERA Jacket	58 - 59
VARESE Trouser	58 - 59
TERAMO Dress	60 - 61

WOMEN'S COLLECTION SUMMARY

Women's Jackets	62 - 63
Women's Waistcoat, Dress, Belts & Skirts	64 - 65
Women's Trousers & Trouser Profiles	66 - 67

MEN'S

CASSINO Jacket	46 - 47
CASSINO Trouser	46 - 47
AVALINO Jacket	48 - 49
AVALINO Trouser	48 - 49
IMOLA Jacket	50 - 51
IMOLA Trouser	50 - 51
BUSSO Waistcoat	50 - 51

MEN'S COLLECTION SUMMARY

Men's Jackets, Waistcoat & Trousers	68 - 69 - 70
-------------------------------------	--------------

COLOUR CHOICE & AFTERCARE	71
---------------------------	----





SOPHISTICATED COLLECTION



- 54% Polyester, 44% Wool, 2% Lycra
- 270gm fabric, Nanotech stain-resistant finish
- Machine washable tailoring
- Ideal for management, financial/banking sectors, hotels, front of house

CASSINO Jacket

(Mid Blue)

Slim fit, single breasted, 2 button jacket, side vents, ticket pocket, slim lapels with saddle stitching, piano faced interior with slim pocket jets.

Prato Shirt

(White)

Slim fit, double cuff.



Cassino Trouser

(Mid Blue)

Slim fit, flat front trouser, 2 side pockets, 1 rear pocket.

Prato Shirt

(White)

Slim fit, double cuff.

NEW COLOURWAY

Mantova Shirt

(Black/White Stripe)

Classic fit, long sleeve, chest pocket,
2 button cuff, contrast inner collar and cuff.

Avalino Trousers

(Black)

Tailored fit, flat front trousers,
2 side pockets, 1 rear pocket.



Interior styling
on all men's Jackets

TAILORED FIT

AVALINO Jacket

(Light Grey)

Tailored fit, single
breasted, 2 button jacket,
side vents, 3 inside pockets,
mobile phone pocket.

Pisa Shirt

(Sky Blue)



NEW!
AVAILABLE TO SIZE 56R

IMOLA Jacket

(Navy Pinstripe)

Classic fit, single breasted,
3 button jacket, centre vent,
3 inside pockets,
mobile phone pocket.

Andora Shirt

(White Herringbone)



Busso Waistcoat

(Navy)

Cloth backed, 2 welt pockets,
5 button front.



CLASSIC FIT

Imola Trousers

(Navy)

Classic fit, single pleat,
2 side pockets, 1 rear pocket.

CALVI Jacket

(Light Grey)

Short, slim fit, 2 button jacket, cutaway front, slim notch lapel, front breast darts, jetted pockets, plain back, tailored back panels, 1 inside pocket.

Treviso Blouse

(Blue)



Scapoli Waistcoat

(Light Grey)

Cloth backed, 2 welt pockets, 4 button front.



SELECTED STYLES
NOW FROM SIZE 4

Genoa Trouser

(Light Grey)

Slim leg, front hook fastening, 2 side pockets, mock rear pockets, belt loops.

Felina Blouse

(White)

Short sleeve, round neck, front pleat detail, bust darts, rear gold zip detail.

Numana Skirt

(Mid Blue)

Straight skirt, centre vent, shaped back panels, full stretch lining.



TAILORED FIT

NOVARA Jacket

(Mid Blue)

Tailored fit, 2 button jacket, peaked lapel, contrast detail on lapel and pockets, centre vent, tailored back panels, 1 inside pocket.



SUSA Jacket

(Charcoal)

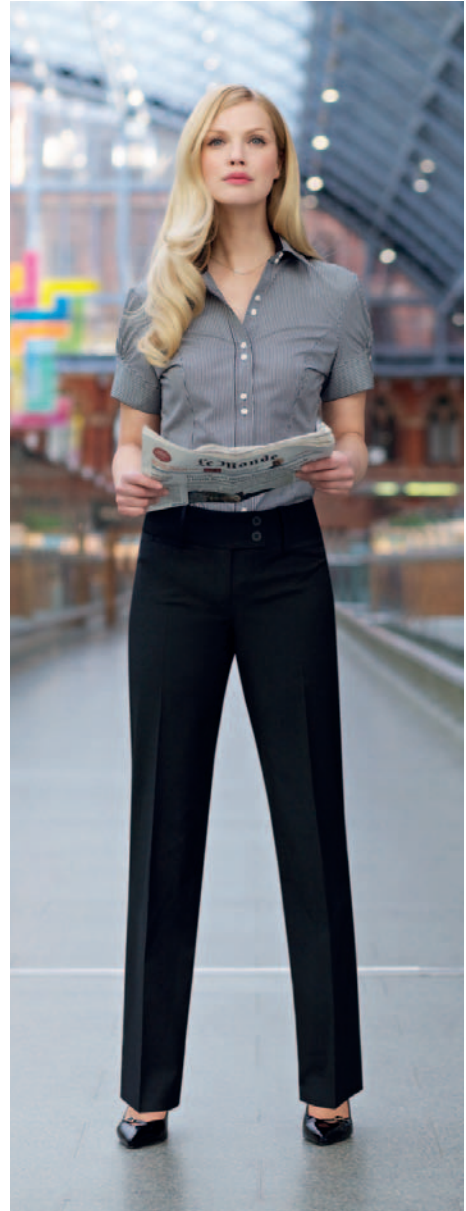
Tailored fit, 3 button jacket, rounded lapel and pockets, 1 inside pocket, plain back.

Treviso Blouse

(White)



TAILORED FIT JACKET



Miranda Trouser

(Black)

Parallel leg trouser; low waist, front double button fastening, key card pocket, mock rear pockets.

Liguria Blouse

(Black/White Stripe)

Semi fitted, short sleeve, 2 button adjustable cuff.

Campania Blouse

(Candy Stripe)

Semi fitted, long sleeve,
contrast cuff.

Varese Trouser

(Black)

Straight leg trouser,
single button front fastening,
key card pocket.



CLASSIC FIT JACKET

OPERA Jacket

(Navy)

Classic fit, 2 button jacket,
2 slanted flap pockets,
1 inside pocket, centre vent.



COMPLEMENTARY STYLES

Susa Jacket

(Black)

Tailored fit,
3 button jacket,
rounded lapel
and pockets,
1 inside pocket,
plain back.



Teramo Dress

(Charcoal)



WOMEN'S SOPHISTICATED COLLECTION

54% Polyester / 44% Wool / 2% Lycra
270gm fabric, Nanotech stain-resistant finish, machine washable

SLIM FIT
JACKET
FROM
SIZE 4R



TAILORED FIT
JACKET



CALVI Jacket (Light Grey)

Short, slim fit 2 button jacket, cutaway front, slim notch lapel, front breast darts, jetted pockets, plain back, tailored back panels, 1 inside pocket.

Sizes: 6 - 16 petite
4 - 18 regular
6 - 16 long

Codes & Colours:

2252A Navy
2252C Charcoal
2252D Black
2252G Light Grey
2252H Mid Blue

SUSA Jacket (Charcoal)

Tailored fit, 3 button jacket, rounded lapel and pockets, plain back, 1 inside pocket.

Sizes: 6 - 16 petite
6 - 24 regular
8 - 18 long

Codes & Colours:

2179A Navy
2179B Navy Pinstripe
2179C Charcoal
2179D Black
2179F Charcoal Pinstripe
2179G Light Grey

TAILORED FIT JACKET



NOVARA Jacket (Mid Blue)
Tailored fit, 2 button jacket, peaked lapel,
contrast detail on lapel and pockets,
centre vent, tailored back panels,
1 inside pocket.

Sizes: 6 - 18 petite*
6 - 24 regular
8 - 18 long

Codes & Colours:

2222A Navy
2222B Navy Pinstripe
2222C Charcoal
2222D Black
2222F Charcoal Pinstripe
2222G Light Grey
2222H Mid Blue

*Size 18 petite available in solid colours only

CLASSIC FIT JACKET



OPERA Jacket (Navy)
Classic fit, 2 button jacket,
2 slanted flap pockets,
centre vent, 1 inside pocket.

Sizes: 6 - 16 petite
6 - 24 regular
10 - 24 long

Codes & Colours:

2250A Navy
2250C Charcoal
2250D Black
2250G Light Grey

WOMEN'S SOPHISTICATED COLLECTION

54% Polyester / 44% Wool / 2% Lycra
270gm fabric, Nanotech stain-resistant finish, machine washable

SUPERB WAISTCOAT & DRESS



ACCESSORIES



2248A Navy/Nude



2248D Black/Nude

SCAPOLI Waistcoat (Navy)

Cloth backed,
4 button front,
2 welt pockets.

Sizes: 6 - 24 long

Codes & Colours:

2200A Navy
2200B Navy Pinstripe
2200C Charcoal
2200D Black
2200F Charcoal Pinstripe
2200G Light Grey
2200H Mid Blue

TERAMO Dress (Charcoal)

Shift dress with princess seam,
short sleeve, centre vent,
full stretch lining.

Sizes: 6 - 24 regular

Codes & Colours:

2238A Navy
2238C Charcoal
2238D Black
2238G Light Grey
2238H Mid Blue

FASHION Belts (Twin Packs)

Simple women's fashion belts
with gold buckle which
complement our dresses
and trousers perfectly.

Sizes: XS 6
S 8 - 10
M 12 - 14
L 16 - 18
XL 20 - 22 - 24

Codes & Colours:

2248A Navy/Nude
2248D Black/Nude

**NEW
STYLE**
SKIRT



BRONTE Skirt (Charcoal)
Flared A-line skirt, centre front seam with pleat detail, narrow waistband, fob pocket with saddle stitching, full stretch lining.

Sizes: 6 - 24 regular - 22"

Codes & Colours:

2253A Navy
2253C Charcoal
2253D Black
2253G Light Grey

**NOW
AVAILABLE
FROM
SIZE 4R**



NUMANA Skirt (Mid Blue)
Straight skirt, centre vent, shaped back panels, full stretch lining.

Sizes: 4 - 24 regular - 22"*
8 - 24 long - 25"
8 - 24 x-long - 27"

Codes & Colours:

2224A Navy
2224B Navy Pinstripe
2224C Charcoal
2224D Black
2224F Charcoal Pinstripe
2224G Light Grey
2224H Mid Blue

* Size 4R available in solid colours only

WOMEN'S SOPHISTICATED COLLECTION

54% Polyester / 44% Wool / 2% Lycra
270gm fabric, Nanotech stain-resistant finish, machine washable

SLIM
LEG
PROFILE



STRAIGHT
LEG
PROFILE



PARALLEL
LEG
PROFILE



**NOW
AVAILABLE
FROM
SIZE 4**

GENOA Trouser (Mid Blue)
Slim leg trouser; front hook fastening,
2 side pockets, mock rear
pockets, half lined, belt loops.

Sizes: 4* - 24 waist in leg lengths
S-27", R-29", L-31", XL-33"
& 36" unfinished

Codes & Colours:

2234A Navy
2234B Navy Pinstripe
2234C Charcoal
2234D Black
2234F Charcoal Pinstripe
2234G Light Grey
2234H Mid Blue

*Size 4 available in solid colours only
Half hem width at size 12 = 21cm

VARESE Trouser (Navy)
Straight leg trouser; single button
front fastening, key card pocket.

Sizes: 6 - 24 waist in leg lengths
S-27", R-29", L-31", XL-33"
& 36" unfinished

Codes & Colours:

2109A Navy
2109B Navy Pinstripe
2109C Charcoal
2109D Black
2109F Charcoal Pinstripe
2109G Light Grey

Half hem width at size 12 = 22cm

MIRANDA Trouser (Light Grey)
Parallel leg trouser; low waist,
front double button fastening,
key card pocket, mock rear pockets.

Sizes: 6 - 24 waist in leg lengths
S-27", R-29", L-31", XL-33"
& 36" unfinished

Codes & Colours:

2181A Navy
2181B Navy Pinstripe
2181C Charcoal
2181D Black
2181F Charcoal Pinstripe
2181G Light Grey

Half hem width at size 12 = 23cm

LEG PROFILES

SLIM LEG PROFILE



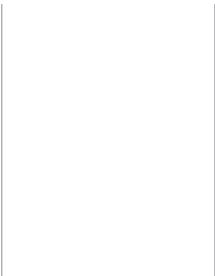
STRAIGHT LEG PROFILE



PARALLEL LEG PROFILE



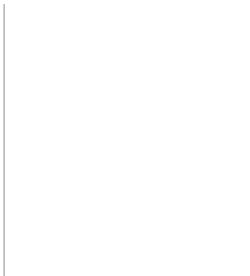
GENOA Trouser
(Mid Blue)
Slim leg profile.



*21cm



VARESE Trouser
(Navy)
Straight leg profile.



*22cm



MIRANDA Trouser
(Light Grey)
Parallel leg profile.



*23cm



* Half hem measure at size 12

MEN'S SOPHISTICATED COLLECTION

54% Polyester / 44% Wool / 2% Lycra
270gm fabric, Nanotech stain-resistant finish, machine washable

**SLIM FIT
JACKET**



**SLIM FIT
TROUSER**



CASSINO Jacket (Mid Blue)
Slim fit, single breasted, 2 button jacket,
side vents, ticket pocket, slim lapels with
saddle stitching, piano faced interior
with slim pocket jets.

Sizes: 34" - 44" short
34" - 46" regular
34" - 44" long

Codes & Colours:

5985A Navy
5985C Charcoal
5985D Black
5985G Light Grey
5985H Mid Blue

CASSINO Trousers (Mid Blue)
Slim fit, flat front trouser; 2 side pockets,
1 rear pocket.

Sizes: 28" - 40" waist in leg lengths
S-29.5", R-31.5", L-33"
& 36" unfinished

Codes & Colours:

8655A Navy
8655C Charcoal
8655D Black
8655G Light Grey
8655H Mid Blue

Half hem width at waist size 34" = 19cm

**TAILORED
FIT**
JACKET

NEW!
AVAILABLE
TO SIZE
56R



**TAILORED
FIT**
TROUSER



AVALINO Jacket (Light Grey)
Tailored fit, single breasted,
2 button jacket, side vents, 3 inside
pockets, mobile phone pocket.

Sizes: 36" - 48" short
34"* - 56"* regular
38" - 48" long

Codes & Colours:

5647A Navy
5647B Navy Pinstripe
5647C Charcoal
5647D Black
5647F Charcoal Pinstripe
5647G Light Grey
5647H Mid Blue

* Sizes 34R to 56R available in solid colours only.
Other colours available in sizes 36R to 52R

AVALINO Trousers (Light Grey)
Tailored fit, flat front trouser;
2 side pockets,
1 rear pocket.

Sizes: 28" - 46"* waist in leg lengths
S-29.5", R-31.5", L-33"
& 36" unfinished

Codes & Colours:

8387A Navy
8387B Navy Pinstripe
8387C Charcoal
8387D Black
8387F Charcoal Pinstripe
8387G Light Grey
8387H Mid Blue

Half hem width at waist size 34" = 21cm
*Waist size 46 available in solid colours only

MEN'S SOPHISTICATED COLLECTION

54% Polyester / 44% Wool / 2% Lycra
270gm fabric, Nanotech stain-resistant finish, machine washable

**CLASSIC
FIT
JACKET**



**CLASSIC
FIT
TROUSER**



IMOLA Jacket (Navy Pinstripe)
Classic fit, single breasted,
3 button jacket, centre vent, 3 inside
pockets, mobile phone pocket.

Sizes: 36" - 48" short
36" - 56"* regular
38" - 48" long

Codes & Colours:
5646A Navy
5646B Navy Pinstripe
5646C Charcoal
5646D Black
5646F Charcoal Pinstripe

* Size 56R available in solid Navy only

IMOLA Trousers (Black)
Classic fit, single pleat,
2 side pockets, 1 rear pocket.

Sizes: 28" - 52" waist in leg lengths
S-29.5", R-31.5", L-33"
& 36" unfinished

Codes & Colours:
8314A Navy
8314B Navy Pinstripe
8314C Charcoal
8314D Black
8314F Charcoal Pinstripe

Half hem width at waist size 34" = 22cm
*Waist sizes 50-52 available in solid colours only

BUSSO Waistcoat (Charcoal Pinstripe)
Cloth backed, 2 welt
pockets, 5 button front.

Sizes: 36" - 50" regular

Codes & Colours:
1074A Navy *
1074B Navy Pinstripe
1074C Charcoal *
1074D Black *
1074F Charcoal Pinstripe
1074G Light Grey
1074H Mid Blue

* Available up to size 56R

FABRIC COLOUR CHOICE

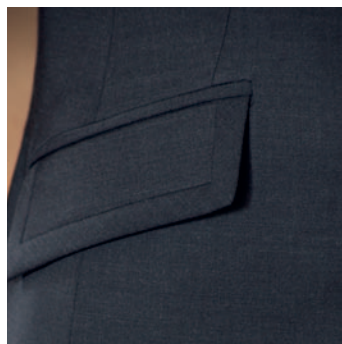
Our **SOPHISTICATED** collection is available in up to 7 fabric colour choices.



A. Navy



B. Navy Pinstripe



C. Charcoal



D. Black



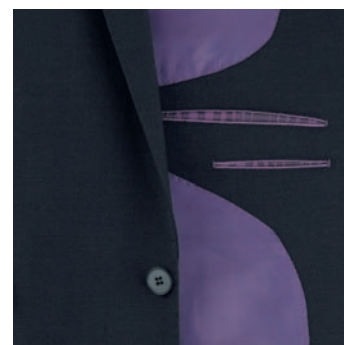
F. Charcoal Pinstripe



G. Light Grey



H. Mid Blue



Interior

WASHCARE INSTRUCTIONS

WASHING

For the best results ensure that the suit is washed separately & machine wash as wool. Garments will need to be removed immediately from the machine when the cycle has ended.

DRYING

Place the jacket on the hanger; gently shake and re-shape by straightening seams. Fold the trousers to the front creases and hang over the bar on garment hanger. Allow both garments to dry naturally & keep away from direct heat. Do not tumble dry.

FINISHING

If required, press the garments using a cool iron over a damp cloth. Alternatively, garments from the Sophisticated Collection can be dry cleaned.



nanotech
Nanotech fabrics by Brook Taverner



MACHINE
WASHABLE

40°

SUITABLE
FOR DRY
CLEANING



PERFORMANCE collection

17 piece collection in a choice of up to 4 colours

WOMEN'S

ROSEWOOD Jacket	74 - 75
ASTORIA Trouser	75 - 76
WALDORF Waistcoat	77
CORINTHIA Dress	78 - 79
GROSVENOR Trouser	81
RITZ Jacket	80 - 81
DORCHESTER Trouser	82
MAYFAIR Jacket	82 - 83
WYNDHAM Skirt	83 - 84 - 85
CONNAUGHT Jacket	84 - 85

WOMEN'S COLLECTION SUMMARY

Women's Jackets	92 - 93
Women's Trousers & Trouser Profiles	94 - 95
Women's Waistcoat, Dress & Skirt	96

MEN'S

HOLBECK Jacket	86 - 87
HOLBECK Trouser	86 - 87
ALDWYCH Jacket	88 - 89
ALDWYCH Trouser	88 - 89
LANGHAM Jacket	90 - 91
LANGHAM Trouser	90 - 91
CAPITAL Waistcoat	77

MEN'S COLLECTION SUMMARY

Men's Jackets, Trousers & Waistcoat	98 - 99 - 100
-------------------------------------	---------------

COLOUR CHOICE & AFTERCARE	101
---------------------------	-----





PERFORMANCE COLLECTION



- 65% Polyester, 35% Wool with Shape Memory Technology
- 325gm crease-resistant fabric
- Machine washable tailoring
- Ideal for hotels, hospitality, councils, FM & security

NEW SLIM FIT

Felina Blouse

(Cream)

Short sleeve ladies' blouse, round neck, front pleat detail, bust darts.



Astoria Trousers

(Navy)

Slim leg trousers; front hook fastening, 2 side pockets, mock rear pockets, half lined, belt loops.

ROSEWOOD Jacket

(Navy)

Short, slim fit, 1 button jacket, peaked lapel, 2 flap and 2 jetted pockets, plain back, tailored back panels, 1 inside pocket.

Soave Blouse

(Blue)



AVAILABLE FROM SIZE 4

COMPLEMENTARY STYLES

Aldwych Jacket

(Mid Grey)

Tailored fit, single breasted,
2 button jacket, side vents,
3 inside pockets, mobile phone pocket.

Aldwych Trouser

(Mid Grey)

Tailored fit, flat front trouser,
2 side pockets, 1 rear pocket.



Corinthia Dress

(Mid Grey)



Fashion Belts

(Twin Packs, Navy/Nude)

Simple women's fashion belts with gold
buckle which complement our dresses
and trousers perfectly.

TAILORED FIT

Grosvenor Trousers

(Mid Grey)

Straight leg trousers,
single button front fastening,
key card pocket, half lined,
belt loops.



GROSVENOR NOW
AVAILABLE UP TO SIZE 30

RITZ Jacket

(Black)

Tailored fit, 3 button jacket,
peaked lapels,
1 inside pocket,
tailored back panels,
centre vent.



MAYFAIR Jacket

(Mid Grey)

Tailored fit, 3 button jacket, rounded lapel and pockets, 1 inside pocket, plain back.

Franca Blouse

(Sky Blue)

Semi-fitted, long sleeve, fly front, rounded contrast white collar.



TAILORED FIT JACKET



Dorchester Trouser

(Mid Grey)

Parallel leg trouser; low waist, front double button fastening, key card pocket, mock rear pockets, half lined, belt loops.

Riola Blouse

(White)

Long sleeve ladies' blouse, round neck, front pleat detail, bust darts.

Wyndham Skirt

(Charcoal)

Straight skirt, centre vent,
shaped back panels,
full stretch lining.

Riola Blouse

(White)

Long sleeve ladies' blouse,
round neck, front pleat detail,
bust darts.



CONNAUGHT Jacket

(Charcoal)

Classic fit, 2 button jacket,
notch lapel,
1 inside pocket,
centre vent.

Villela Blouse

(Charcoal/White Stripe)

Semi-fitted, long sleeve,
double cuff with
complementary
silk cuff knots.



NOW AVAILABLE UP TO SIZE 30

HOLBECK Jacket

(Navy)

Slim fit, single breasted,
2 button jacket,
side vents, slim lapels
with saddle stitching,
piano faced interior with
slim pocket jets.

Pisa Shirt

(Blue)



NEW SLIM FIT JACKET



Holbeck Trouser

(Navy)

Slim fit, flat front trouser;
2 side pockets,
1 rear pocket.

Pisa Shirt

(White)

Slim fit, long sleeve,
twin rear darts for a
defined silhouette,
single cuff.

TAILORED FIT



Aldwych Trousers
(Charcoal)

Tailored fit trousers;
flat front, 2 side pockets,
1 rear pocket.



NEW Men's jacket interior



ALDWYCH Jacket
(Mid Grey)

Tailored fit, single breasted
jacket, 2 button front,
side vents,
3 inside pockets,
mobile phone pocket.

Pisa Shirt
(White)

Slim fit, long sleeve,
twin rear darts for a
defined silhouette,
single cuff.

LANGHAM Jacket

(Black)
Classic fit, single breasted
3 button jacket,
centre vent,
3 inside pockets,
mobile phone pocket.

Andora Shirt

(Raspberry Stripe)



Langham Trousers

(Navy)
Classic fit, single pleat,
2 side pockets,
1 rear pocket.

LARGER
SIZES
NOW
AVAILABLE

WOMEN'S PERFORMANCE COLLECTION

65% Polyester / 35% Wool with Shape Memory Stretch Technology
325gm crease-resistant fabric, machine washable

NEW SLIM FIT JACKET FROM SIZE 4R



ROSEWOOD Jacket (Navy)

Short, slim fit, 1 button jacket, peaked lapel, 2 flap and 2 jetted pockets, plain back, tailored back panels, 1 inside pocket.

Sizes: 6 - 16 petite
4 - 18 regular
6 - 16 long

Codes & Colours:

2263A Navy
2263C Charcoal
2263D Black
2263G Mid Grey

TAILORED FIT JACKET



RITZ Jacket (Black)

Tailored fit, 3 button jacket, peaked lapels, 1 inside pocket, tailored back panels, centre vent.

Sizes: 6 - 16 petite
6 - 24 regular
8 - 18 long

Codes & Colours:

2227A Navy
2227C Charcoal
2227D Black
2227G Mid Grey

**TAILORED
FIT
JACKET**



MAYFAIR Jacket (Mid Grey)
Tailored fit, 3 button jacket,
rounded lapel and pockets,
1 inside pocket, plain back.

Sizes: 6 - 16 petite
6 - 24 regular
8 - 18 long

Codes & Colours:

2228A Navy
2228C Charcoal
2228D Black
2228G Mid Grey

**CLASSIC
FIT
JACKET**



**LARGER
SIZES NOW
AVAILABLE**

CONNAUGHT Jacket (Charcoal)
Classic fit, 2 button jacket,
2 slanted flap pockets,
1 inside pocket, centre vent.

Sizes: 6 - 18 petite
6 - 30* regular
8 - 24 long

Codes & Colours:

2226A Navy
2226C Charcoal
2226D Black
2226G Mid Grey

* Mid Grey available to 24R only

WOMEN'S PERFORMANCE COLLECTION

65% Polyester / 35% Wool with Shape Memory Stretch Technology
325gm crease-resistant fabric, machine washable

SLIM LEG PROFILE

AVAILABLE
FROM
SIZE 4



STRAIGHT LEG PROFILE

LARGER
SIZES NOW
AVAILABLE



PARALLEL LEG PROFILE



ASTORIA Trousers (Mid Grey)
Slim leg trouser; front hook fastening,
2 side pockets, mock rear
pockets, half lined, belt loops.

Sizes: 4 - 24 waist in leg lengths
S-27", R-29", L-31", XL-33"
& 36" unfinished

Codes & Colours:

2262A Navy
2262C Charcoal
2262D Black
2262G Mid Grey

Half hem width at size 12 = 21cm

GROSVENOR Trousers (Navy)
Straight leg trouser; single button
front fastening, key card pocket,
half lined, belt loops.

Sizes: 6 - 30* waist in leg lengths
S-27", R-29", L-31", XL-33"
& 36" unfinished

Codes & Colours:

2231A Navy
2231C Charcoal
2231D Black
2231G Mid Grey

Half hem width at size 12 = 22cm
* Mid Grey available to 24 only

DORCHESTER Trousers (Charcoal)
Parallel leg trouser; low waist, front double
button fastening, key card pocket,
mock rear pockets, half lined, belt loops.

Sizes: 6 - 24 waist in leg lengths
S-27", R-29", L-31", XL-33"
& 36" unfinished

Codes & Colours:

2232A Navy
2232C Charcoal
2232D Black
2232G Mid Grey

Half hem width at size 12 = 23cm

LEG PROFILES

SLIM

LEG
PROFILE



STRAIGHT

LEG
PROFILE

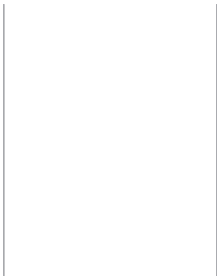


PARALLEL

LEG
PROFILE

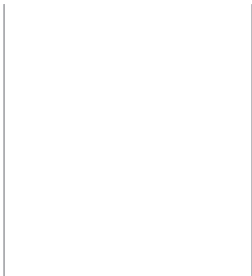


ASTORIA Trouser
(Mid Grey)
Slim leg profile.



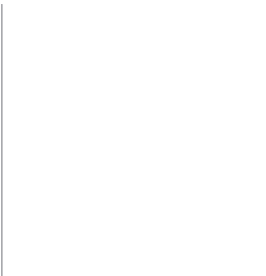
*21cm

GROSVENOR Trouser
(Navy)
Straight leg profile.



*22cm

DORCHESTER Trouser
(Charcoal)
Parallel leg profile.



*23cm

* Half hem measure at size 12

WOMEN'S PERFORMANCE COLLECTION

65% Polyester / 35% Wool with Shape Memory Stretch Technology
325gm crease-resistant fabric, machine washable

SUPERB WAISTCOAT & DRESS



LARGER
SIZES
NOW
AVAILABLE

WALDORF Waistcoat (Black)

Lining backed with adjuster;
4 button front,
2 welt pockets.

Sizes: 6 - 24 regular

Codes & Colours:

2260A Navy
2260C Charcoal
2260D Black
2260G Mid Grey

CORINTHIA Dress (Mid Grey)

Beautifully tailored V-neck dress,
short sleeve, breast darts, centre vent,
full stretch lining.

Sizes: 6 - 24 regular

Codes & Colours:

2246A Navy
2246C Charcoal
2246D Black
2246G Mid Grey

WYNDHAM Skirt (Navy)

Straight skirt, centre vent,
shaped back panels,
full stretch lining.

Sizes: 4 - 30* regular - 22"
8 - 24 long - 25"
8 - 24 x-long - 27"

Codes & Colours:

2229A Navy
2229C Charcoal
2229D Black
2229G Mid Grey

* Mid Grey available to 24R only

MEN'S PERFORMANCE COLLECTION

65% Polyester / 35% Wool with Shape Memory Stretch Technology
325gm crease-resistant fabric, machine washable

NEW SLIM FIT JACKET



NEW SLIM FIT TROUSER



HOLBECK Jacket (Navy)

Slim fit, single breasted, 2 button jacket, side vents, slim lapels with saddle stitching, piano faced interior with slim pocket jets.

Sizes: 34" - 44" short
34" - 46" regular
34" - 44" long

Codes & Colours:

3500A Navy
3500C Charcoal
3500D Black
3500G Mid Grey

HOLBECK Trousers (Navy)

Slim fit, flat front trouser; 2 side pockets, 1 rear pocket

Sizes: 28" - 40" waist in leg lengths
S-29.5", R-31.5", L-33"
& 36" unfinished

Codes & Colours:

8733A Navy
8733C Charcoal
8733D Black
8733G Mid Grey

Half hem width at waist size 34" = 19cm

**TAILORED
FIT**
JACKET



ALDWYCH Jacket (Mid Grey)
Tailored fit, single breasted,
2 button jacket, side vents,
3 inside pockets, mobile phone pocket.

Sizes: 36" - 48" short
36" - 50" regular
38" - 48" long

Codes & Colours:
3125A Navy
3125C Charcoal
3125D Black
3125G Mid Grey

**TAILORED
FIT**
TROUSER



ALDWYCH Trousers (Charcoal)
Tailored fit, flat front trouser;
2 side pockets,
1 rear pocket.

Sizes: 28" - 44" waist in leg lengths
S-29.5", R-31.5", L-33"
& 36" unfinished

Codes & Colours:
8557A Navy
8557C Charcoal
8557D Black
8557G Mid Grey

Half hem width at waist size 34" = 21cm

MEN'S PERFORMANCE COLLECTION

65% Polyester / 35% Wool with Shape Memory Stretch Technology
325gm crease-resistant fabric, machine washable

CLASSIC FIT JACKET



CLASSIC FIT TROUSER

LARGER
SIZES NOW
AVAILABLE



LANGHAM Jacket (Black)
Classic fit, single breasted jacket,
3 button front, centre vent,
3 inside pockets, mobile phone pocket.

Sizes: 36" - 48" short
36" - 60" regular
38" - 48" long

Codes & Colours:

5984A Navy
5984C Charcoal
5984D Black

LANGHAM Trousers (Navy)
Classic fit, single pleat trouser;
2 side pockets, 1 rear pocket.

Sizes: 28" - 56" waist in leg lengths
S-29.5", R-31.5", L-33"
& 36" unfinished

Codes & Colours:

8525A Navy
8525C Charcoal
8525D Black

CAPITAL Waistcoat (Black)
Lining backed with adjuster;
2 welt pockets, 5 button front.

Sizes: 36" - 54" regular

Codes & Colours:

I300A Navy
I300C Charcoal
I300D Black
I300G Mid Grey

Half hem width at waist size 34" = 22cm

FABRIC COLOUR CHOICE

Our **PERFORMANCE** collection is available in up to 4 fabric colour choices.



A. Navy



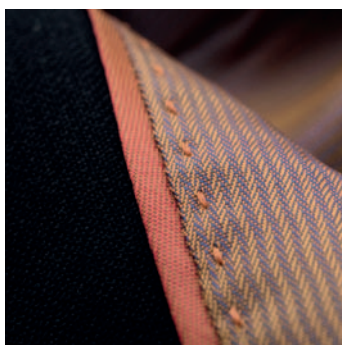
C. Charcoal



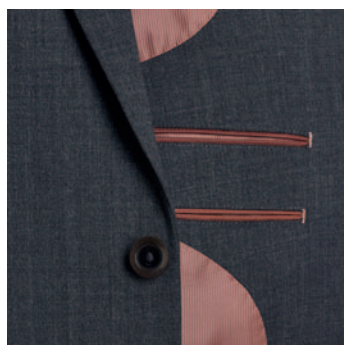
D. Black



G. Mid Grey



Women's interior



Men's interior

WASHCARE INSTRUCTIONS

WASHING

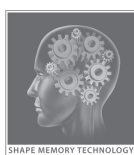
For the best results ensure that the suit is washed separately & machine wash as wool. Garments will need to be removed immediately from the machine when the cycle has ended.

DRYING

Place the jacket on the hanger; gently shake and re-shape by straightening seams. Fold the trousers to the front creases and hang over the bar on garment hanger. Allow both garments to dry naturally & keep away from direct heat. Do not tumble dry.

FINISHING

If required, press the garments using a cool iron over a damp cloth. Alternatively, garments from the Performance Collection can be dry cleaned.



MACHINE
WASHABLE

40°

SUITABLE
FOR DRY
CLEANING



CORPORATE FASHION COLLECTION

11 piece collection in 4 colours

WOMEN'S

IMPERIA Dress	104 - 105
TARANTO Skirt	105 - 110
APULIA Jacket	108 - 109
UDINE Trouser	108 - 109
APRILLA Jacket	110 - 111
BERGAMO Waistcoat	110
COMO Jacket	112 - 113
ANDRETTA Trouser	112 - 113

WOMEN'S COLLECTION SUMMARY

Women's Jackets	114
Women's Waistcoat, Dress & Skirt	115
Women's Trousers, Belts & Trouser Profiles	116 - 117

MEN'S

GIGLIO Jacket	104 - 106 - 107
GIGLIO Trouser	104 - 107
BARI Waistcoat	106

MEN'S COLLECTION SUMMARY

Men's Jackets, Trousers & Waistcoat	118
-------------------------------------	-----

COLOUR CHOICE & AFTERCARE	119
---------------------------	-----





CORPORATE FASHION COLLECTION



- 67% Polyester, 30% Wool, 3% Lycra weft stretch
- 270gm fabric, Nanotech stain-resistant finish
- Machine washable tailoring
- Ideal for boutique hotels, bars & retailers

Taranto Skirt

(Navy Multi Stripe)

Straight skirt, stretch lining, detailed waistband, 2 mock pockets, centre vent.

Treviso Blouse

(White)

Semi-fitted, long sleeve, classic collar, single 3 button cuff.



Fashion Belts

(Twin Packs, Navy/Nude)

Simple women's fashion belts with gold buckle which complement our dresses and trousers perfectly.

IMPERIA Dress

(Black)

Versatile V-neck shift dress, capped sleeves, princess seams, centre vent, full stretch lining.



GIGLIO Jacket

(Black)

Tailored fit, Single breasted,
2 button jacket, side vents,
ticket pocket,
3 inside pockets,
mobile phone pocket.

Alba Shirt

(White)



TAILORED FIT STYLES



Bari Waistcoat

(Navy Multi Stripe)

Cloth backed,
2 welt pockets,
5 button front.

Andora Shirt

(White Herringbone)

Classic fit, long sleeve,
double cuff with
silk cuff knots.

SLIM LEG PROFILE



Udine Trousers (Navy Multi Stripe)

Slim leg trousers; front hook fastening,
2 side pockets, mock rear
pockets, belt loops.

APULIA Jacket

(Black Multi Stripe)

Tailored fit, 2 button,
2 flap & 2 jet pockets,
1 inside pocket, centre vent.

Campania Blouse

(Candy Stripe)



APRILLA Jacket

(Navy Multi Stripe)

Slim fit, 1 button jacket,
edge-stitched lapel,
2 slant pockets,
1 inside pocket,
centre vent.

Palena Blouse

(White)



SLIM FIT



Bergamo Waistcoat

(Black Multi Stripe)

Cloth backed,
2 welt pockets,
4 button front.

Campania Blouse

(White)

Semi fitted, long sleeve,

Taranto Skirt

(Black Multi Stripe)

Straight skirt,
stretch lining,
detailed waistband,
2 mock pockets,
centre vent.



Andretta Trouser

(Navy Multi Stripe)

Parallel leg trouser; low waist, front double button fastening, key card pocket, mock rear pockets, belt loops.

Treviso Blouse

(White)



COMO Jacket

(Black Multi Stripe)

Tailored fit, 3 button jacket, rounded lapel and pockets, 1 inside pocket, plain back.

Perano Blouse

(Pink/Grey Stripe)

WOMEN'S

CORPORATE FASHION COLLECTION

67% Polyester / 30% Wool / 3% Lycra

270gm fabric, Nanotech stain-resistant finish, machine washable

SLIM FIT JACKET



TAILORED FIT JACKET



TAILORED FIT JACKET



APRILLA Jacket (Navy Multi Stripe)

Slim fit, 1 button jacket, edge-stitched lapel,
2 slant pockets, 1 inside pocket, centre vent.

Sizes: 6 - 16 petite
6 - 18 regular
10 - 18 long

Codes & Colours:

2184A Navy
2184B Navy Multi Stripe
2184D Black
2184E Black Multi Stripe

APULIA Jacket (Black Multi Stripe)

Tailored fit, DB lapel, 2 button jacket, 2 flap &
2 jet pockets, 1 inside pocket, centre vent.

Sizes: 6 - 16 petite
6 - 24 regular
8 - 18 long

Codes & Colours:

2237A Navy
2237B Navy Multi Stripe
2237D Black
2237E Black Multi Stripe

COMO Jacket (Black Multi Stripe)

Tailored fit, 3 button jacket, rounded lapel
and pockets, 1 inside pocket, plain back.

Sizes: 6 - 16 petite
6 - 24 regular
8 - 18 long

Codes & Colours:

2186A Navy
2186B Navy Multi Stripe
2186D Black
2186E Black Multi Stripe



BERGAMO Waistcoat (Black)

Cloth backed,
4 button front,
2 welt pockets.

Sizes: 6 - 24 long

Codes & Colours:

2192A Navy
2192B Navy Multi Stripe
2192D Black
2192E Black Multi Stripe



IMPERIA Dress (Black)

Versatile V-neck shift dress, capped
sleeves, princess seams, centre vent,
full stretch lining.

Sizes: 6 - 24 regular

Codes & Colours:

2245A Navy
2245B Navy Multi Stripe
2245D Black
2245E Black Multi Stripe



TARANTO Skirt (Black Multi Stripe)

Straight skirt, stretch lining,
detailed waistband, 2 mock pockets,
centre vent.

Sizes: 6 - 24 regular - 22"
8 - 24 long - 25"
8 - 24 x-long - 27"

Codes & Colours:

2236A Navy
2236B Navy Multi Stripe
2236D Black
2236E Black Multi Stripe

WOMEN'S CORPORATE FASHION COLLECTION

67% Polyester / 30% Wool / 3% Lycra

270gm fabric, Nanotech stain-resistant finish, machine washable

ACCESSORIES



2248A Navy/Nude



2248D Black/Nude

SLIM LEG PROFILE



PARALLEL LEG PROFILE



FASHION Belts (Twin Packs)

Simple women's fashion belts with gold buckle which complement our dresses and trousers perfectly.

Sizes: XS 6
S 8 - 10
M 12 - 14
L 16 - 18
XL 20 - 22 - 24

Codes & Colours:

2248A Navy/Nude
2248D Black/Nude

UDINE Trousers (Navy Multi Stripe)

Slim leg trouser; front hook fastening, 2 side pockets, mock rear pockets, belt loops.

Sizes: 6 - 24 waist in leg lengths
S-27", R-29", L-31", XL-33"
& 36" unfinished

Codes & Colours:

2235A Navy
2235B Navy Multi Stripe
2235D Black
2235E Black Multi Stripe

ANDRETTA Trousers (Navy)

Parallel leg trouser; low waist, front double button fastening, key card pocket, mock rear pockets, belt loops.

Sizes: 6 - 24 waist in leg lengths
S-27", R-29", L-31", XL-33"
& 36" unfinished

Codes & Colours:

2188A Navy
2188B Navy Multi Stripe
2188D Black
2188E Black Multi Stripe

Half hem width at size 12 = 21cm

Half hem width at size 12 = 23cm

LEG PROFILES

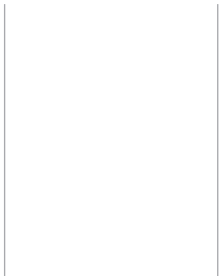
SLIM
LEG
PROFILE



PARALLEL
LEG
PROFILE

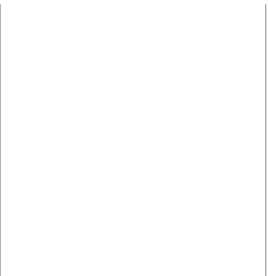


UDINE Trousers
(Black)
Slim leg profile.



*21cm

ANDRETTA Trousers
(Navy)
Parallel leg profile.



*23cm

* Half hem measure at size 12

MEN'S

CORPORATE FASHION COLLECTION

67% Polyester / 30% Wool / 3% Lycra

270gm fabric, Nanotech stain-resistant finish, machine washable

**TAILORED
FIT
JACKET**



**TAILORED
FIT
TROUSER**



GIGLIO Jacket (Black)

Tailored fit, single breasted jacket,
2 button front, side vents, ticket pocket,
3 inside pockets, mobile phone pocket.

Sizes: 36" - 48" short
36" - 50" regular
38" - 48" long

Codes & Colours:

3157A Navy
3157B Navy Multi Stripe
3157D Black
3157E Black Multi Stripe

GIGLIO Trousers (Black)

Tailored fit, flat front trousers;
2 side pockets, 1 rear pocket.

Sizes: 28" - 48" waist in leg lengths
S-29.5", R-31.5", L-33"
& 36" unfinished

Codes & Colours:

8431A Navy
8431B Navy Multi Stripe
8431D Black
8431E Black Multi Stripe

BARI Waistcoat (Black)

Cloth backed, 2 welt pockets,
5 button front.

Sizes: 36" - 50" regular

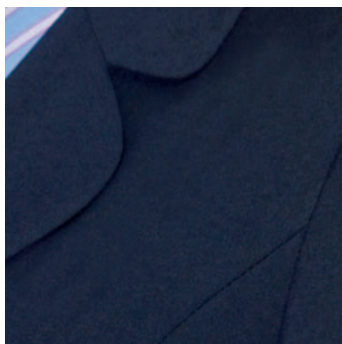
Codes & Colours:

1072A Navy
1072B Navy Multi Stripe
1072D Black
1072E Black Multi Stripe

Half hem width at waist size 34" = 22cm

FABRIC COLOUR CHOICE

Our **CORPORATE FASHION** collection is available in 4 fabric colour choices.



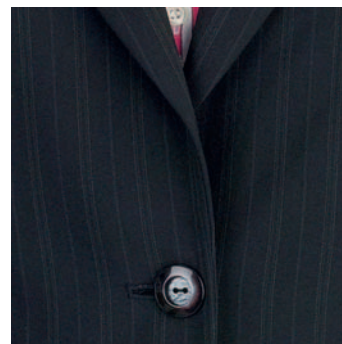
A. Navy



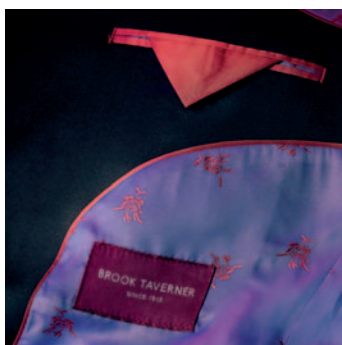
C. Navy Multi Stripe



D. Black



E. Black Multi Stripe



Interior

WASHCARE INSTRUCTIONS

WASHING

For the best results ensure that the suit is washed separately & machine wash as wool. Garments will need to be removed immediately from the machine when the cycle has ended.

DRYING

Place the jacket on the hanger; gently shake and re-shape by straightening seams. Fold the trousers to the front creases and hang over the bar on garment hanger. Allow both garments to dry naturally & keep away from direct heat. Do not tumble dry.

FINISHING

If required, press the garments using a cool iron over a damp cloth. Alternatively, garments from the Corporate Fashion Collection can be dry cleaned.

MACHINE
WASHABLE

40°

SUITABLE
FOR DRY
CLEANING



nanotech
Nanotech fabrics by Brook Taverner



CONCEPT COLLECTION

10 piece collection in up to 3 colours

WOMEN'S

HEBE Jacket	128 - 129
SIGMA Skirt	128 - 129
OMEGA Waistcoat	129
AURA Trouser	127

WOMEN'S COLLECTION SUMMARY

Women's Jackets	130
Women's Waistcoat & Skirt	130 - 131
Women's Trouser & Trouser Profile	131

MEN'S

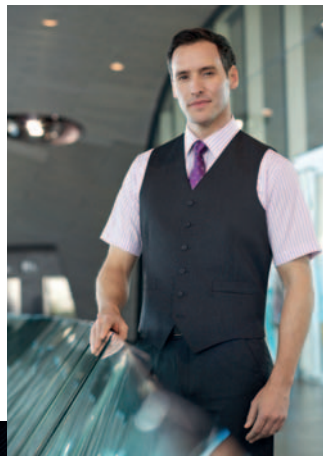
ZEUS Jacket	122 - 123
APOLLO Trouser	122 - 123 - 126
ATLAS Trouser	126
ALPHA Jacket	124 - 125
DELTA Trouser	125 - 126
GAMMA Waistcoat	122

MEN'S COLLECTION SUMMARY

Men's Jackets, Trousers & Waistcoat	132 - 133 - 134
-------------------------------------	-----------------

COLOUR CHOICE & AFTERCARE 135





CONCEPT COLLECTION



- 65% Polyester, 35% Viscose
- 390gm fabric with Stain Defence Treatment
- Machine washable tailoring
- Ideal for FM, security, transport, hospitality, health sector

ZEUS Jacket

(Charcoal)

Tailored fit, single breasted,
2 button jacket,
2 slant pockets,
side vents,
3 inside pockets.

Mantova Shirt

(Black/White Stripe)



Gamma Waistcoat

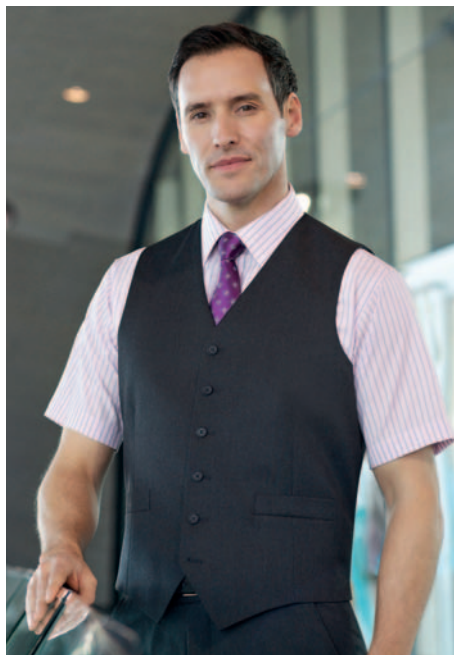
(Charcoal)

6 button front,
2 welt pockets,
cloth backed,
longer back
with adjuster

Roccella Shirt

(Pink/Grey Stripe)

Classic fit,
short sleeve,
chest pocket.



Apollo Trouser

(Black)

Tailored fit, flat front,
2 side pockets,
1 rear pocket.

Rufina Shirt

(White/Grey Stripe)

Classic fit, long sleeve,
single cuff,
chest pocket.

TAILORED FIT SUITING

CLASSIC FIT

Rufina Shirt

(Blue/White Stripe)

Classic fit, long sleeve,
single cuff
chest pocket.



Delta Trousers

(Navy)

Classic fit, single
pleat trouser,
2 side pockets,
1 rear pocket.

ALPHA Jacket

(Navy)

Classic fit, single breasted,
3 button jacket,
2 straight pockets,
centre vent,
3 inside pockets.



NOW AVAILABLE UP TO SIZE 60 REGULAR

Omega Waistcoat

(Black)

6 button front, 2 welt pockets,
cloth backed, longer back with adjuster.



Sigma Skirt

(Black)

Straight skirt,
centre vent, fully lined.

HEBE Jacket

(Charcoal)

Classic fit, single breasted,
2 button jacket,
2 slanted flap pockets,
notch lapel,
1 inside pocket,
centre vent.



SELECTED STYLES
NOW AVAILABLE FROM SIZE 4

WOMEN'S **CONCEPT** COLLECTION

65% Polyester / 35% Viscose

390gm fabric with Stain Defence Treatment, machine washable

CLASSIC FIT JACKET

NOW
AVAILABLE
FROM
SIZE 4



HEBE Jacket (Charcoal)
Classic fit, single breasted, 2 button
jacket, notch lapel, 2 slanted flap
pockets, 1 inside pocket, centre vent.

Sizes: 8 - 16 petite
4 - 24 regular
10 - 18 long

Codes & Colours:

2254A Navy
2254C Charcoal
2254D Black



OMEGA Waistcoat (Navy)
6 button front, 2 welt pockets,
cloth backed, longer back with adjuster.

Sizes: 6 - 24 regular

Codes & Colours:

2233A Navy
2233C Charcoal
2233D Black



STRAIGHT
LEG
PROFILE

**NOW
AVAILABLE
FROM SIZE 4**



AURA Trousers (Black)

Straight leg trouser; slim waistband,
2 side pockets, mock rear pockets,
belt loops.

Sizes: 4 - 24 waist in leg lengths
S-27", R-29", L-31", XL-33"
& 36" unfinished

Codes & Colours:

2259A Navy
2259C Charcoal
2259D Black

Half hem width at size 12 = 22cm

AURA Trousers

(Black)
Straight leg profile.



*22cm



* Half hem measure at size 12

SIGMA Skirt (Black)

Straight skirt,
centre vent, fully lined.

Sizes: 4 - 24 regular - 22"
8 - 18 long - 25"

Codes & Colours:

2221A Navy
2221C Charcoal
2221D Black

MEN'S CONCEPT COLLECTION

65% Polyester / 35% Viscose
390gm fabric with Stain Defence Treatment, machine washable

CLASSIC FIT JACKET

NOW
AVAILABLE
UP TO
SIZE 60



CLASSIC FIT TROUSER



ALPHA Jacket (Navy)
Classic fit, single breasted,
3 button jacket, 2 straight pockets,
centre vent, 3 inside pockets.

Sizes: 38" - 44" short
36" - 60" regular
40" - 48" long

Codes & Colours:

5981A Navy
5981C Charcoal
5981D Black

DELTA Trousers (Charcoal)
Classic fit, single pleat,
2 side pockets,
1 rear pocket.

Sizes: 28" - 54" waist in leg lengths
S-29.5", R-31.5", L-33"
& 36" unfinished

Codes & Colours:

8515A Navy
8515C Charcoal
8515D Black

Half hem width at waist size 34" = 22cm

NEW CLASSIC FIT

TROUSER
with waistease
function



Exterior



Interior

NEW TROUSER WITH WAISTEASE FUNCTION

ATLAS Trousers (Navy)

Classic fit, single pleat, with waistease function,
2 side pockets, 1 rear pocket

Sizes: 28" - 54" waist in leg lengths
S-29.5", R-31.5", L-33"
& 36" unfinished

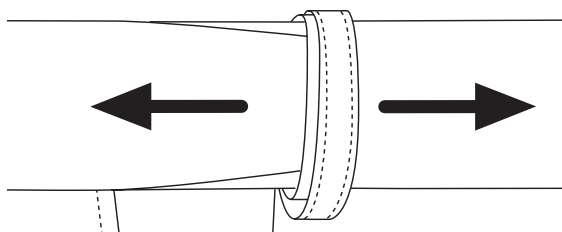
Codes & Colours:

8732A Navy
8732C Charcoal
8732D Black

Half hem width at waist size 34" = 22cm

We are delighted to introduce our ATLAS trouser!

The ATLAS has the same cut and fit as our best-selling Delta trouser, but also benefits from a stretch waistease function. This provides extra space in the waist area, bringing such benefits as freedom of movement, support and comfort - a definite plus for wearers in the transport, security and FM sectors.



MEN'S CONCEPT COLLECTION

65% Polyester / 35% Viscose
390gm fabric with Stain Defence Treatment, machine washable

**TAILORED
FIT
JACKET**



**TAILORED
FIT
TROUSER**



ZEUS Jacket (Charcoal)
Tailored fit, single breasted
2 button jacket, 2 slant pockets,
side vents, 3 inside pockets.

Sizes: 36" - 48" short
36" - 50" regular
38" - 48" long

Codes & Colours:
3124A Navy
3124C Charcoal
3124D Black

APOLLO Trousers (Charcoal)
Tailored fit, flat front,
2 side pockets, 1 rear pocket.

Sizes: 28" - 50" waist in leg lengths
S-29.5", R-31.5", L-33"
& 36" unfinished

Codes & Colours:
8627A Navy
8627C Charcoal
8627D Black

GAMMA Waistcoat (Black)
6 button front, 2 welt pockets,
cloth backed, longer back with adjuster.

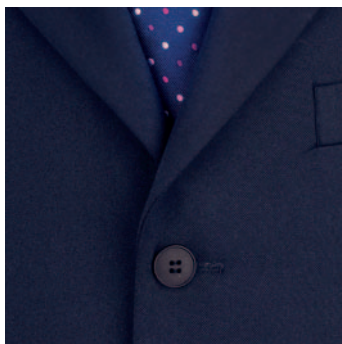
Sizes: 36" - 56" regular

Codes & Colours:
1094A Navy
1094C Charcoal
1094D Black

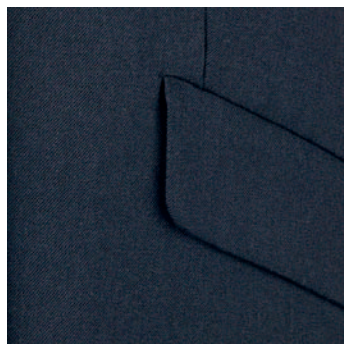
Half hem width at waist size 34" = 21cm

FABRIC COLOUR CHOICE

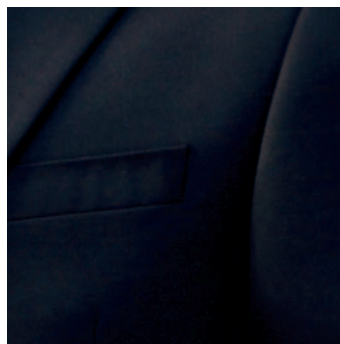
Our **CONCEPT** collection is available in 3 fabric colour choices.



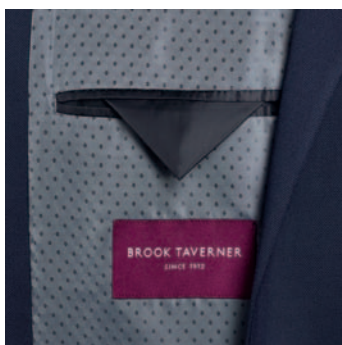
A. Navy



C. Charcoal



D. Black



Interior

WASHCARE INSTRUCTIONS

WASHING

For the best results ensure that the suit is washed separately & machine wash as wool. Garments will need to be removed immediately from the machine when the cycle has ended.

DRYING

Place the jacket on the hanger; gently shake and re-shape by straightening seams. Fold the trousers to the front creases and hang over the bar on garment hanger. Allow both garments to dry naturally & keep away from direct heat. Do not tumble dry.

FINISHING

If required, press the garments using a cool iron over a damp cloth. Alternatively, garments from the Concept Collection can be dry cleaned.



MACHINE
WASHABLE

30°

SUITABLE
FOR DRY
CLEANING



ONE COLLECTION

7 piece collection in Black

WOMEN'S

SATURN Jacket	138 - 139
LUNA Waistcoat	138 - 142 - 143
PLUTO Skirt	138 - 139
VENUS Trouser	139 - 144

WOMEN'S COLLECTION SUMMARY

Women's Jacket, Waistcoat & Skirt	146
Women's Trouser & Trouser Profile	147

MEN'S

JUPITER Jacket	140 - 141
MERCURY Waistcoat	140 - 141 - 142 - 143
MARS Trouser	140 - 141 - 145

MEN'S COLLECTION SUMMARY

Men's Jacket, Trouser & Waistcoat	148
-----------------------------------	-----

COLOUR CHOICE & AFTERCARE	149
---------------------------	-----





ONE COLLECTION



- 100% Superfine Polyester
- 335gm fabric
- Machine washable tailoring
- Ideal for hospitality, schools, FM & health sector

Venus Trouser

(Black)

Straight leg trouser, slim waistband with belt loops & key loop, 2 side pockets, mock rear pockets, machine washable.



Pluto Skirt

(Black)

Straight skirt, centre vent, fully lined, machine washable.

TAILORED FIT

AVAILABLE FROM 4R TO 26R

SATURN Jacket

(Black)

Short, tailored fit,
1 button jacket, slim lapel
with seam detail,
centre vent,
machine washable.

Palena Blouse

(White)



JUPITER Jacket

(Black)

Tailored fit, single breasted,
2 button jacket,
side vents,
machine washable.

Alba Shirt

(White)



TAILORED FIT
AVAILABLE FROM SIZE 34R

Mercury Waistcoat

(Black)

5 button front, 2 welt pockets,
lining backed with adjuster,
machine washable.



Mars Trousers

(Black)

Tailored fit, flat front trouser; key loop,
2 side pockets, 1 rear pocket,
machine washable.

SUPERB WEARABILITY



LUNA Waistcoat

(Black)

5 button front,
2 welt pockets,
lining backed
with adjuster;
machine washable.



MERCURY Waistcoat

(Black)

5 button front,
2 welt pockets,
lining backed
with adjuster;
machine washable.

WOMEN'S ONE COLLECTION

100% Polyester
335gm fabric, machine washable

TAILORED FIT JACKET



LINING BACKED WAISTCOAT WITH ADJUSTER



WOMEN'S SIZES 4 to 26



SATURN Jacket (Black)
Short, tailored fit, 1 button jacket,
slim lapel with seam detail, centre vent.

Sizes: 8 - 16 short
4 - 26 regular
10 - 18 long

Code & Colour:
2255D Black

LUNA Waistcoat (Black)
5 button front, 2 welt pockets,
lining backed with adjuster.

Sizes: XS 4 - 6
S 8 - 10
M 12 - 14
L 16 - 18
XL 20 - 22
XXL 24 - 26

Code & Colour:
2257D Black

PLUTO Skirt (Black)
Straight skirt, centre vent,
fully lined.

Sizes: 4 - 26 regular
length 22"

Code & Colour:
2258D Black

NEW
LENGTHS
AVAILABLE

STRAIGHT
LEG TROUSER
WITH
KEY
LOOP



STRAIGHT
LEG
PROFILE



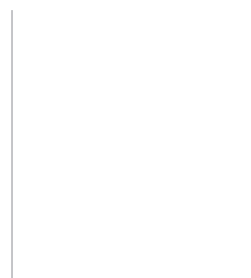
VENUS Trouser (Black)
Straight leg trouser; slim waistband,
belt loops & key loop, 2 side pockets,
mock rear pockets,

Sizes: 4 - 26 waist in leg lengths
R-29", L-31", XL-33"
& 36" unfinished

Code & Colour:
2256D Black

Half hem width at size 12 = 22cm

VENUS Trouser
(Black)
Straight leg profile.



*22cm



* Half hem measure at size 12

MEN'S ONE COLLECTION

100% Polyester
335gm fabric, machine washable

TAILORED FIT JACKET



TAILORED FIT TROUSER WITH KEY LOOP



LINING BACKED WAISTCOAT WITH ADJUSTER



JUPITER Jacket (Black)
Tailored fit, single breasted jacket,
2 button front, side vents.

Sizes: 38" - 44" short
34" - 50" regular
40" - 46" long

Code & Colour:
3344D Black

MARS Trousers (Black)
Tailored fit, flat front trouser;
key loop, 2 side pockets, 1 rear pocket.

Sizes: 30" - 42" short, inside leg length 29.5"
26" - 48" regular, inside leg length 31.5"
30" - 42" long, inside leg length 33"
26" - 48" unfinished, inside leg length 36"

Code & Colour:
8648D Black

MERCURY Waistcoat (Black)
5 button front, 2 welt pockets,
lining backed with adjuster.

Sizes: XS 34" - 36"
S 38" - 40"
M 42" - 44"
L 46" - 48"
XL 50" - 52"

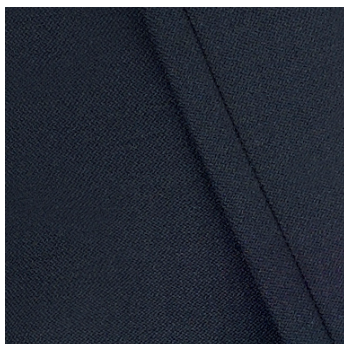
Code & Colour:
1295D Black

Half hem width at waist size 34" = 21cm

NEW
LENGTHS
AVAILABLE

FABRIC COLOUR CHOICE

Our **ONE** collection is available in **Black**.



D. Black



Key loop



One Collection interior

WASHCARE INSTRUCTIONS

WASHING

For the best results ensure that the suit is washed separately & machine wash as wool. Garments will need to be removed immediately from the machine when the cycle has ended.

DRYING

Place the jacket on the hanger; gently shake and re-shape by straightening seams. Fold the trousers to the front creases and hang over the bar on garment hanger. Allow both garments to dry naturally & keep away from direct heat. Do not tumble dry.

FINISHING

If required, press the garments using a cool iron over a damp cloth. Alternatively, garments from the One Collection can be dry cleaned.



MACHINE
WASHABLE

40°

SUITABLE
FOR DRY
CLEANING





FEEL CONFIDENT & PROFESSIONAL

