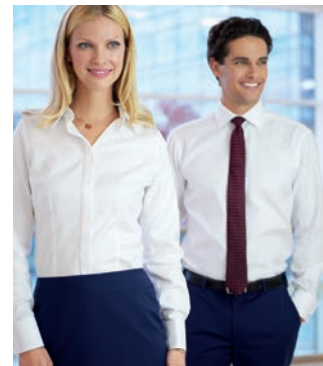
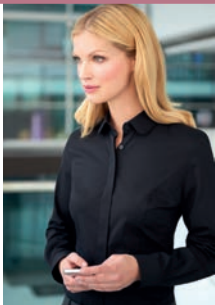




SOPHISTICATED

2016



SOPHISTICATED COLLECTION

18 piece collection in a choice of up to 7 colours

WOMEN'S

CALVI Jacket	10 - 11
BRONTE Skirt	10
GENOA Trouser	11
SCAPOLI Waistcoat	11
NOVARA Jacket	12 - 13
NUMANA Skirt	12 - 13
SUSA Jacket	14 - 15 - 16
MIRANDA Trouser	14 - 15
OPERA Jacket	16 - 17
VARESE Trouser	16 - 17
TERAMO Dress	18 - 19

WOMEN'S COLLECTION SUMMARY

Women's Jackets	20 - 21
Women's Waistcoat, Dress, Belts & Skirts	22 - 23
Women's Trousers & Trouser Profiles	24 - 25

MEN'S

CASSINO Jacket	04 - 05
CASSINO Trouser	04 - 05
AVALINO Jacket	06 - 07
AVALINO Trouser	06 - 07
IMOLA Jacket	08 - 09
IMOLA Trouser	08 - 09
BUSSO Waistcoat	08 - 09

MEN'S COLLECTION SUMMARY

Men's Jackets, Waistcoat & Trousers	26 - 27 - 28
-------------------------------------	--------------

COLOUR CHOICE & AFTERCARE	29
---------------------------	----





SOPHISTICATED COLLECTION



- 54% Polyester, 44% Wool, 2% Lycra
- 270gm fabric, Nanotech stain-resistant finish
- Machine washable tailoring
- Ideal for management, financial/banking sectors, hotels, front of house

CASSINO Jacket

(Mid Blue)

Slim fit, single breasted, 2 button jacket, side vents, ticket pocket, slim lapels with saddle stitching, piano faced interior with slim pocket jets.

Prato Shirt

(White)

Slim fit, double cuff.



Cassino Trouser

(Mid Blue)

Slim fit, flat front trouser; 2 side pockets, 1 rear pocket.

Prato Shirt

(White)

Slim fit, double cuff.

NEW
COLOURWAY



SLIM FIT SUITING



Avalino Jacket
(Light Grey)

TAILORED FIT
SUITING

Mantova Shirt
(Black/White Stripe)

Classic fit, long sleeve, chest pocket,
2 button cuff, contrast inner collar and cuff.

Avalino Trousers
(Black)

Tailored fit, flat front trouser,
2 side pockets, 1 rear pocket.



Interior styling
on all men's jackets

TAILORED FIT

AVALINO Jacket
(Light Grey)

Tailored fit, single
breasted, 2 button jacket,
side vents, 3 inside pockets,
mobile phone pocket.

Pisa Shirt
(Sky Blue)



NEW!
AVAILABLE TO SIZE 56R

Busso Waistcoat
(Navy)

Cloth backed, 2 welt pockets,
5 button front.

IMOLA Jacket

(Navy Pinstripe)

Classic fit, single breasted,
3 button jacket, centre vent,
3 inside pockets,
mobile phone pocket.

Andora Shirt

(White Herringbone)



CLASSIC FIT

Imola Trousers

(Navy)

Classic fit, single pleat,
2 side pockets, 1 rear pocket.

CLASSIC FIT SUITING



Calvi Jacket
(Light Grey)

Bronte Skirt
(Light Grey)
Flared A-line skirt, centre front seam with pleat detail, narrow waistband, fob pocket with saddle stitching, full stretch lining.

Franca Blouse
(Red Stripe)
Semi fitted, Long sleeve.



CALVI Jacket

(Light Grey)

Short, slim fit, 2 button jacket, cutaway front, slim notch lapel, front breast darts, jetted pockets, plain back, tailored back panels, 1 inside pocket.

Treviso Blouse
(Blue)



Scapoli Waistcoat (Light Grey)

Cloth backed, 2 welt pockets, 4 button front.



SELECTED STYLES
NOW FROM SIZE 4

Genoa Trouser (Light Grey)

Slim leg, front hook fastening, 2 side pockets, mock rear pockets, belt loops.

Novara Jacket
(Mid Blue)

Numana Skirt
(Mid Blue)



TAILORED
FIT JACKET

Felina Blouse

(White)

Short sleeve, round neck, front pleat detail, bust darts, rear gold zip detail.

Numana Skirt

(Mid Blue)

Straight skirt, centre vent, shaped back panels, full stretch lining.



TAILORED FIT

NOVARA Jacket (Mid Blue)

Tailored fit, 2 button jacket, peaked lapel, contrast detail on lapel and pockets, centre vent, tailored back panels, 1 inside pocket.



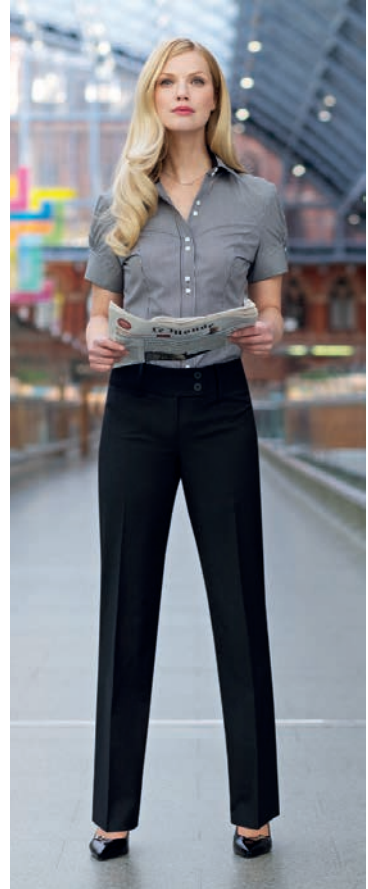
SUSA Jacket

(Charcoal)

Tailored fit, 3 button jacket, rounded lapel and pockets, 1 inside pocket, plain back.

Treviso Blouse

(White)



Miranda Trouser

(Black)

Parallel leg trouser; low waist, front double button fastening, key card pocket, mock rear pockets.

Liguria Blouse

(Black/White Stripe)

Semi fitted, short sleeve, 2 button adjustable cuff.

TAILORED FIT JACKET

TAILORED FIT



Susa Jacket
(Black)

Miranda Trouser
(Black)

CLASSIC FIT JACKET



Opera Jacket
(Black)

Varese Trouser
(Black)

Campania Blouse
(Candy Stripe)
Semi fitted, long sleeve,
contrast cuff.

Varese Trouser
(Black)
Straight leg trouser,
single button front fastening,
key card pocket.



CLASSIC FIT JACKET

OPERA Jacket
(Navy)

Classic fit, 2 button jacket,
2 slanted flap pockets,
1 inside pocket, centre vent.



COMPLEMENTARY STYLES

Susa Jacket (Black)

Tailored fit,
3 button jacket,
rounded lapel
and pockets,
1 inside pocket,
plain back.



Teramo Dress (Charcoal)



A woman with blonde hair pulled back, wearing a black short-sleeved dress and black heels, stands in a modern airport terminal. The background shows a large glass and steel structure with a yellow train visible through the windows. A pink banner in the top right corner contains the text 'ESSENTIAL BUSINESS WEAR'. A white box in the bottom left corner contains the product name and description.

ESSENTIAL BUSINESS WEAR

TERAMO Dress

(Black)

Shift dress with princess seam,
short sleeve, centre vent,
full stretch lining.

WOMEN'S

SOPHISTICATED COLLECTION

54% Polyester / 44% Wool / 2% Lycra

270gm fabric, Nanotech stain-resistant finish, machine washable

SLIM FIT
JACKET FROM
SIZE 4R



**TAILORED
FIT**
JACKET



CALVI Jacket (Light Grey)

Short, slim fit 2 button jacket, cutaway front, slim notch lapel, front breast darts, jetted pockets, plain back, tailored back panels, 1 inside pocket.

Sizes: 6 - 16 petite
4 - 18 regular
6 - 16 long

Codes & Colours:

2252A Navy
2252C Charcoal
2252D Black
2252G Light Grey
2252H Mid Blue

SUSA Jacket (Charcoal)

Tailored fit, 3 button jacket, rounded lapel and pockets, plain back, 1 inside pocket.

Sizes: 6 - 16 petite
6 - 24 regular
8 - 18 long

Codes & Colours:

2179A Navy
2179B Navy Pinstripe
2179C Charcoal
2179D Black
2179F Charcoal Pinstripe
2179G Light Grey

**TAILORED
FIT
JACKET**



**CLASSIC
FIT
JACKET**



NOVARA Jacket (Mid Blue)

Tailored fit, 2 button jacket, peaked lapel, contrast detail on lapel and pockets, centre vent, tailored back panels, 1 inside pocket.

Sizes: 6 - 18 petite*
6 - 24 regular
8 - 18 long

Codes & Colours:

2222A Navy
2222B Navy Pinstripe
2222C Charcoal
2222D Black
2222F Charcoal Pinstripe
2222G Light Grey
2222H Mid Blue

OPERA Jacket (Navy)

Classic fit, 2 button jacket, 2 slanted flap pockets, centre vent, 1 inside pocket.

Sizes: 6 - 16 petite
6 - 24 regular
10 - 24 long

Codes & Colours:

2250A Navy
2250C Charcoal
2250D Black
2250G Light Grey

*Size 18 petite available in solid colours only

WOMEN'S SOPHISTICATED COLLECTION

54% Polyester / 44% Wool / 2% Lycra
270gm fabric, Nanotech stain-resistant finish, machine washable

SUPERB WAISTCOAT & DRESS



ACCESSORIES



2248A Navy/Nude



2248D Black/Nude

SCAPOLI Waistcoat (Navy)

Cloth backed,
4 button front,
2 welt pockets.

Sizes: 6 - 24 long

Codes & Colours:

2200A Navy
2200B Navy Pinstripe
2200C Charcoal
2200D Black
2200F Charcoal Pinstripe
2200G Light Grey
2200H Mid Blue

TERAMO Dress (Charcoal)

Shift dress with princess seam,
short sleeve, centre vent,
full stretch lining.

Sizes: 6 - 24 regular

Codes & Colours:

2238A Navy
2238C Charcoal
2238D Black
2238G Light Grey
2238H Mid Blue

FASHION Belts (Twin Packs)

Simple women's fashion belts
with gold buckle which
complement our dresses
and trousers perfectly.

Sizes: XS 6
S 8 - 10
M 12 - 14
L 16 - 18
XL 20 - 22 - 24

Codes & Colours:

2248A Navy/Nude
2248D Black/Nude

**NEW
STYLE**
SKIRT



**NOW
AVAILABLE**
FROM
SIZE 4R



BRONTE Skirt (Charcoal)

Flared A-line skirt, centre front seam with pleat detail, narrow waistband, fob pocket with saddle stitching, full stretch lining.

Sizes: 6 - 24 regular - 22"

Codes & Colours:

2253A Navy
2253C Charcoal
2253D Black
2253G Light Grey

NUMANA Skirt (Mid Blue)

Straight skirt, centre vent, shaped back panels, full stretch lining.

Sizes: 4 - 24 regular - 22"*
8 - 24 long - 25"
8 - 24 x-long - 27"

Codes & Colours:

2224A Navy
2224B Navy Pinstripe
2224C Charcoal
2224D Black
2224F Charcoal Pinstripe
2224G Light Grey
2224H Mid Blue

* Size 4R available in solid colours only

WOMEN'S

SOPHISTICATED COLLECTION

54% Polyester / 44% Wool / 2% Lycra

270gm fabric, Nanotech stain-resistant finish, machine washable

SLIM
LEG
PROFILE



STRAIGHT
LEG
PROFILE



PARALLEL
LEG
PROFILE



NOW
AVAILABLE
FROM
SIZE 4

GENOA Trousers (Mid Blue)

Slim leg trouser; front hook fastening, 2 side pockets, mock rear pockets, half lined, belt loops.

Sizes: 4* - 24 waist in leg lengths S-27", R-29", L-31", XL-33" & 36" unfinished

Codes & Colours:

2234A Navy
2234B Navy Pinstripe
2234C Charcoal
2234D Black
2234F Charcoal Pinstripe
2234G Light Grey
2234H Mid Blue

VARESE Trousers (Navy)

Straight leg trouser; single button front fastening, key card pocket.

Sizes: 6 - 24 waist in leg lengths S-27", R-29", L-31", XL-33" & 36" unfinished

Codes & Colours:

2109A Navy
2109B Navy Pinstripe
2109C Charcoal
2109D Black
2109F Charcoal Pinstripe
2109G Light Grey

MIRANDA Trousers (Light Grey)

Parallel leg trouser; low waist, front double button fastening, key card pocket, mock rear pockets.

Sizes: 6 - 24 waist in leg lengths S-27", R-29", L-31", XL-33" & 36" unfinished

Codes & Colours:

2181A Navy
2181B Navy Pinstripe
2181C Charcoal
2181D Black
2181F Charcoal Pinstripe
2181G Light Grey

*Size 4 available in solid colours only

LEG PROFILES

SLIM
LEG
PROFILE



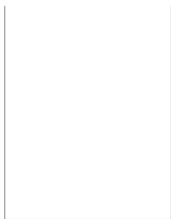
STRAIGHT
LEG
PROFILE



PARALLEL
LEG
PROFILE



GENOA Trousers
(Mid Blue)
Slim leg profile.



*21cm



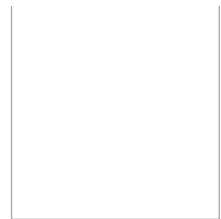
VARESE Trousers
(Navy)
Straight leg profile.



*22cm



MIRANDA Trousers
(Light Grey)
Parallel leg profile.



*23cm



* Half hem measure at size 12

MEN'S

SOPHISTICATED COLLECTION

54% Polyester / 44% Wool / 2% Lycra
270gm fabric, Nanotech stain-resistant finish, machine washable

SLIM FIT
JACKET



SLIM FIT
TROUSER



CASSINO Jacket (Mid Blue)

Slim fit, single breasted, 2 button jacket, side vents, ticket pocket, slim lapels with saddle stitching, piano faced interior with slim pocket jets.

Sizes: 34" - 44" short
34" - 46" regular
34" - 44" long

Codes & Colours:

5985A Navy
5985C Charcoal
5985D Black
5985G Light Grey
5985H Mid Blue

CASSINO Trousers (Mid Blue)

Slim fit, flat front trouser; 2 side pockets, 1 rear pocket.

Sizes: 28" - 40" waist in leg lengths
S-29.5", R-31.5", L-33"
& 36" unfinished

Codes & Colours:

8655A Navy
8655C Charcoal
8655D Black
8655G Light Grey
8655H Mid Blue

Half hem width at waist size 34" = 19cm

TAILORED
FIT
JACKET

NEW!
AVAILABLE
TO SIZE
56R



TAILORED
FIT
TROUSER



AVALINO Jacket (Light Grey)
Tailored fit, single breasted,
2 button jacket, side vents, 3 inside
pockets, mobile phone pocket.

Sizes: 36" - 48" short
34"* - 56"* regular
38" - 48" long

Codes & Colours:

5647A Navy
5647B Navy Pinstripe
5647C Charcoal
5647D Black
5647F Charcoal Pinstripe
5647G Light Grey
5647H Mid Blue

* Sizes 34R to 56R available in solid colours only.
Other colours available in sizes 36R to 52R

AVALINO Trousers (Light Grey)
Tailored fit, flat front trouser,
2 side pockets,
1 rear pocket.

Sizes: 28" - 46"* waist in leg lengths
S-29.5", R-31.5", L-33"
& 36" unfinished

Codes & Colours:

8387A Navy
8387B Navy Pinstripe
8387C Charcoal
8387D Black
8387F Charcoal Pinstripe
8387G Light Grey
8387H Mid Blue

Half hem width at waist size 34" = 21 cm
* Waist size 46 available in solid colours only

MEN'S

SOPHISTICATED COLLECTION

54% Polyester / 44% Wool / 2% Lycra
270gm fabric, Nanotech stain-resistant finish, machine washable

CLASSIC FIT JACKET



CLASSIC FIT TROUSER



IMOLA Jacket (Navy Pinstripe)
Classic fit, single breasted,
3 button jacket, centre vent, 3 inside
pockets, mobile phone pocket.

Sizes: 36" - 48" short
36" - 56"* regular
38" - 48" long

Codes & Colours:

5646A Navy
5646B Navy Pinstripe
5646C Charcoal
5646D Black
5646F Charcoal Pinstripe

IMOLA Trousers (Black)
Classic fit, single pleat,
2 side pockets, 1 rear pocket.

Sizes: 28" - 52" waist in leg lengths
S-29.5", R-31.5", L-33"
& 36" unfinished

Codes & Colours:

8314A Navy
8314B Navy Pinstripe
8314C Charcoal
8314D Black
8314F Charcoal Pinstripe

BUSSO Waistcoat (Charcoal Pinstripe)
Cloth backed, 2 welt
pockets, 5 button front.

Sizes: 36" - 50" regular

Codes & Colours:

1074A Navy *
1074B Navy Pinstripe
1074C Charcoal *
1074D Black *
1074F Charcoal Pinstripe
1074G Light Grey
1074H Mid Blue

* Size 56R available in solid Navy only

Half hem width at waist size 34" = 22cm

* Waist sizes 50-52 available in solid colours only * Available up to size 56R

FABRIC COLOUR CHOICE

Our **SOPHISTICATED** collection is available in up to 7 fabric colour choices.



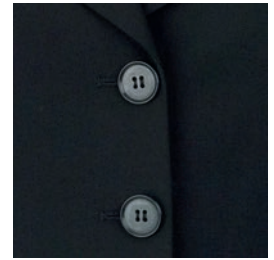
A. Navy



B. Navy Pinstripe



C. Charcoal



D. Black



F. Charcoal Pinstripe



G. Light Grey



H. Mid Blue



Interior

WASHCARE INSTRUCTIONS

WASHING

For the best results ensure that the suit is washed separately & machine wash as wool. Garments will need to be removed immediately from the machine when the cycle has ended.

DRYING

Place the jacket on the hanger, gently shake and re-shape by straightening seams. Fold the trousers to the front creases and hang over the bar on garment hanger. Allow both garments to dry naturally & keep away from direct heat. Do not tumble dry.

FINISHING

If required, press the garments using a cool iron over a damp cloth.



nanotech
Nanotech fabrics by Brook Taverner



MACHINE
WASHABLE

40°

SUITABLE
FOR DRY
CLEANING



SHIRT & BLOUSE COLLECTION

This 29 piece collection offers



MEN'S

PREMIUM COTTON - EASY IRON

ANDORA Classic fit, Double cuff	32 - 33 - 34 - 37 - 38
ALTARE Classic fit, Single cuff	32 - 33 - 34
PRATO Slim fit, Double cuff	32 - 33 - 34 - 35

PREMIUM COTTON - EASY IRON

CHESTER Classic fit, Double cuff	42
CHEADLE Classic fit, Single cuff	42
CHELFORD Slim Fit, Double cuff	43

STRETCH COTTON BLEND - EASY IRON

PISA Slim fit, Single cuff	48 - 49
LUCCA Slim fit, Single cuff	52 - 53

COTTON RICH - EASY IRON

RAPINO Classic fit, Single cuff	54
ALBA Slim fit, Single cuff	56 - 57
ROSELLO Classic fit, Short sleeve	58 - 59

RUFINA Classic fit, Single cuff	60 - 61
ROCELLA Classic fit, Short sleeve	62 - 63

MANTOVA Classic fit, Single cuff	64 - 65
SAVONA Classic fit, Short sleeve	66 - 67

WOMEN'S

PREMIUM COTTON - EASY IRON

VILLETA Semi fitted, Double cuff	32 - 33 - 34 - 37 - 38
OZZERO Semi fitted, Short sleeve	32 - 33 - 37

PREMIUM COTTON - EASY IRON

TREVISO Semi fitted, Single cuff	40 - 41
----------------------------------	---------

CREPE DE CHINE

FELINA Short sleeve blouse	40 - 41
RIOLA Long sleeve blouse	40 - 41

STRETCH COTTON BLEND - EASY IRON

TREVI Semi fitted, Single cuff	46 - 47
SOAVE Semi fitted, Short sleeve	46 - 47
FRANCA Semi fitted, Single cuff	50 - 51

COTTON RICH - EASY IRON

PALENA Semi fitted, Single cuff	54 - 55
PADULI Semi fitted, Short sleeve	58 - 59

PERANO Semi fitted, Single cuff	60 - 61
PESCARA Semi fitted, Short sleeve	62 - 63

CAMPANIA Semi fitted, Single cuff	64 - 65
LIGURIA Semi fitted, Short sleeve	66 - 67

