



CONCEPT

2016



CONCEPT COLLECTION

10 piece collection in 3 colours

WOMEN'S

HEBE Jacket	10 - 11
SIGMA Skirt	10 - 11
OMEGA Waistcoat	11
AURA Trouser	09

WOMEN'S COLLECTION SUMMARY

Women's Jackets	12
Women's Waistcoat & Skirt	12 - 13
Women's Trouser & Trouser Profile	13

MEN'S

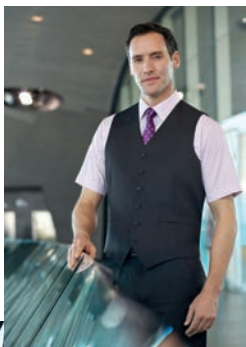
ZEUS Jacket	04 - 05
APOLLO Trouser	04 - 05 - 08
ATLAS Trouser	08
ALPHA Jacket	06 - 07
DELTA Trouser	06 - 07
GAMMA Waistcoat	04

MEN'S COLLECTION SUMMARY

Men's Jackets, Trousers & Waistcoat	14 - 15 - 16
-------------------------------------	--------------

COLOUR CHOICE & AFTERCARE	17
---------------------------	----





CONCEPT COLLECTION



- 65% Polyester, 35% Viscose
- 390gm fabric with Stain Defence Treatment
- Machine washable tailoring
- Ideal for FM, security, transport, hospitality, health sector

ZEUS Jacket

(Charcoal)

Tailored fit, single breasted,
2 button jacket,
2 slant pockets,
side vents,
3 inside pockets.

Mantova Shirt

(Black/White Stripe)



Gamma Waistcoat

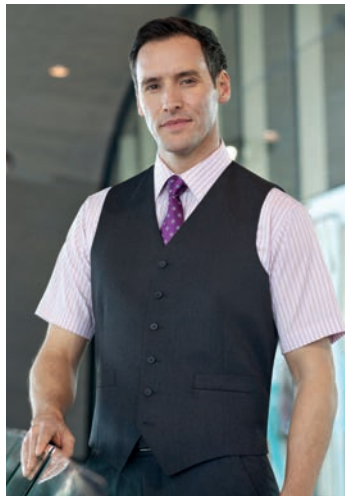
(Charcoal)

6 button front,
2 welt pockets,
cloth backed,
longer back
with adjuster

Roccella Shirt

(Pink/Grey Stripe)

Classic fit,
short sleeve,
chest pocket.



Apollo Trousers

(Black)

Tailored fit, flat front,
2 side pockets,
1 rear pocket.

Rufina Shirt

(White/Grey Stripe)

Classic fit, long sleeve,
single cuff,
chest pocket.

TAILORED FIT SUITING

TAILORED
FIT



CLASSIC FIT

Rufina Shirt
(Blue/White Stripe)
Classic fit, long sleeve,
single cuff
chest pocket.



Delta Trousers
(Navy)
Classic fit, single
pleat trousers;
2 side pockets,
1 rear pocket.

ALPHA Jacket
(Navy)

Classic fit, single breasted,
3 button jacket,
2 straight pockets,
centre vent,
3 inside pockets.



NOW AVAILABLE
UP TO SIZE 60 REGULAR



Apollo Trousers
(Black)
Tailored fit, flat front,
2 side pockets,
1 rear pocket.

Delta Trousers
(Navy)
Classic fit, single
pleat trousers,
2 side pockets,
1 rear pocket.



Atlas Trousers
(Navy)
Classic fit, single
pleat, with waistease
function,
2 side pockets,
1 rear pocket



**NEW TROUSER WITH
WASTEASE FUNCTION**



Aura Trouser

(Black)

Straight leg trouser;
slim waistband,
2 side pockets,
mock rear pockets,
belt loops.

Perano Blouse

(Pink/Grey Stripe)

Semi fitted,
long sleeve,
single cuff.

CLASSIC FIT

Hebe Jacket
(Black)

Sigma Skirt
(Black)
Straight skirt,
centre vent.

Perano Blouse
(White/Grey Stripe)
Semi fitted,
Long sleeve,
single cuff.

Omega Waistcoat

(Black)

6 button front, 2 welt pockets,
cloth backed, longer back with adjuster



Sigma Skirt

(Black)

Straight skirt,
centre vent, fully lined.

HEBE Jacket

(Charcoal)

Classic fit, single breasted,
2 button jacket,
2 slanted flap pockets,
notch lapel,
1 inside pocket,
centre vent.



SELECTED STYLES
NOW AVAILABLE FROM SIZE 4

WOMEN'S **CONCEPT** COLLECTION

65% Polyester / 35% Viscose

390gm fabric with Stain Defence Treatment, machine washable

CLASSIC FIT

JACKET

NOW
AVAILABLE
FROM
SIZE 4



HEBE Jacket (Charcoal)

Classic fit, single breasted, 2 button jacket, notch lapel, 2 slanted flap pockets, 1 inside pocket, centre vent.

Sizes: 8 - 16 petite
4 - 24 regular
10 - 18 long

Codes & Colours:

2254A Navy
2254C Charcoal
2254D Black



OMEGA Waistcoat (Navy)

6 button front, 2 welt pockets, cloth backed, longer back with adjuster.

Sizes: 6 - 24 regular

Codes & Colours:

2233A Navy
2233C Charcoal
2233D Black



STRAIGHT
LEG
PROFILE

**NOW
AVAILABLE
FROM SIZE 4**



AURA Trouser (Black)

Straight leg trouser; slim waistband,
2 side pockets, mock rear pockets,
belt loops.

Sizes: 4 - 24 waist in leg lengths
S-27", R-29", L-31", XL-33"
& 36" unfinished

Codes & Colours:

2259A Navy
2259C Charcoal
2259D Black

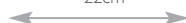
Half hem width at size 12 = 22cm

AURA Trouser

(Black)
Straight leg profile.



*22cm



* Half hem measure at size 12

SIGMA Skirt (Black)

Straight skirt,
centre vent, fully lined.

Sizes: 4 - 24 regular - 22"
8 - 18 long - 25"

Codes & Colours:

2221A Navy
2221C Charcoal
2221D Black

MEN'S

CONCEPT COLLECTION

65% Polyester / 35% Viscose

390gm fabric with Stain Defence Treatment, machine washable

CLASSIC FIT JACKET



ALPHA Jacket (Navy)

Classic fit, single breasted,
3 button jacket, 2 straight pockets,
centre vent, 3 inside pockets.

Sizes: 38" - 44" short
36" - 60" regular
40" - 48" long

Codes & Colours:

5981A	Navy
5981C	Charcoal
5981D	Black

CLASSIC FIT TROUSER



DELTA Trousers (Charcoal)

Classic fit, single pleat,
2 side pockets,
1 rear pocket.

Sizes: 28" - 54" waist in leg lengths
S-29.5", R-31.5", L-33"
& 36" unfinished

Codes & Colours:

8515A	Navy
8515C	Charcoal
8515D	Black

Half hem width at waist size 34" = 22cm

NEW CLASSIC FIT

TROUSER
with waistease
function



Exterior



Interior

NEW TROUSER WITH WASTEASE FUNCTION

ATLAS Trouser (Navy)

Classic fit, single pleat, with waistease
function, 2 side pockets, 1 rear pocket

Sizes: 28" - 54" waist in leg lengths
S-29.5", R-31.5", L-33"
& 36" unfinished

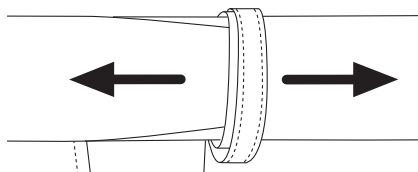
Codes & Colours:

8732A Navy
8732C Charcoal
8732D Black

Half hem width at waist size 34" = 22cm

We are delighted to introduce our ATLAS trouser!

The ATLAS has the same cut and fit as our best-selling Delta trouser; but also benefits from a stretch waistease function. This provides extra space in the waist area, bringing such benefits as freedom of movement, support and comfort - a definite plus for wearers in the transport, security and FM sectors.



MEN'S

CONCEPT COLLECTION

65% Polyester / 35% Viscose

390gm fabric with Stain Defence Treatment, machine washable

TAILORED
FIT
JACKET



TAILORED
FIT
TROUSER



ZEUS Jacket (Charcoal)

Tailored fit, single breasted
2 button jacket, 2 slant pockets,
side vents, 3 inside pockets.

Sizes: 36" - 48" short
36" - 50" regular
38" - 48" long

Codes & Colours:

3124A	Navy
3124C	Charcoal
3124D	Black

APOLLO Trousers (Charcoal)

Tailored fit, flat front,
2 side pockets, 1 rear pocket.

Sizes: 28" - 50" waist in leg lengths
S-29.5", R-31.5", L-33"
& 36" unfinished

Codes & Colours:

8627A	Navy
8627C	Charcoal
8627D	Black

GAMMA Waistcoat (Black)

6 button front, 2 welt pockets,
cloth backed, longer back with adjuster.

Sizes: 36" - 56" regular

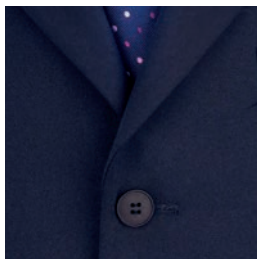
Codes & Colours:

1094A	Navy
1094C	Charcoal
1094D	Black

Half hem width at waist size 34" = 21cm

FABRIC COLOUR CHOICE

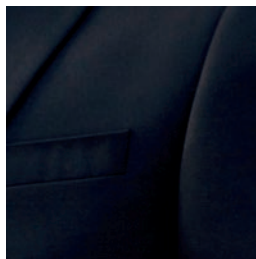
Our **CONCEPT** collection is available in 3 fabric colour choices.



A. Navy



C. Charcoal



D. Black



Interior

WASHCARE INSTRUCTIONS

WASHING

For the best results ensure that the suit is washed separately & machine wash as wool. Garments will need to be removed immediately from the machine when the cycle has ended.

DRYING

Place the jacket on the hanger; gently shake and re-shape by straightening seams. Fold the trousers to the front creases and hang over the bar on garment hanger. Allow both garments to dry naturally & keep away from direct heat. Do not tumble dry.

FINISHING

If required, press the garments using a cool iron over a damp cloth.

Alternatively, garments from the Concept Collection can be dry cleaned.



MACHINE
WASHABLE

30°

SUITABLE
FOR DRY
CLEANING



